

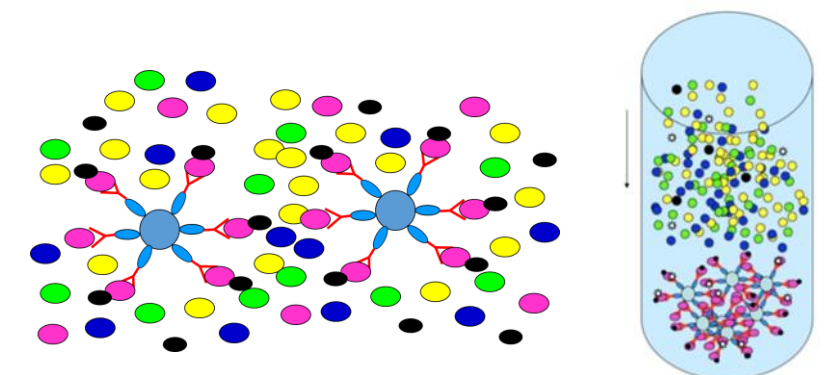
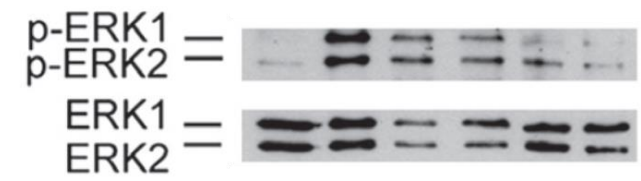
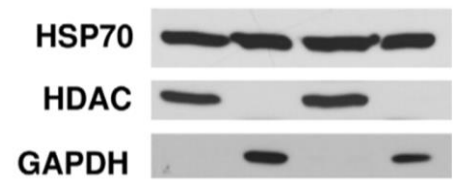
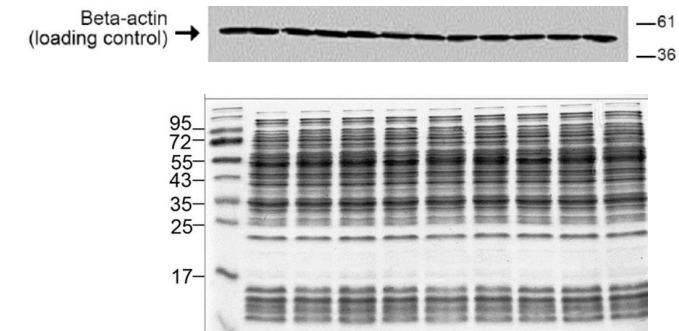


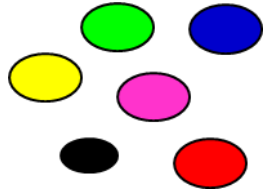
Advanced Cell Biology and Biotechnology

ACBB 2021/22

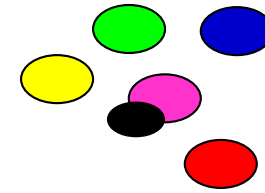
Summary of the previous lesson

- protein expression analysis
- loading control (housekeeping genes, stain-free technology)
- cell compartment control (nucleus, cytoplasm, membrane, mitochondria)
- mock control
- phosphorylation control
- immuno-precipitation
- co-immunoprecipitation

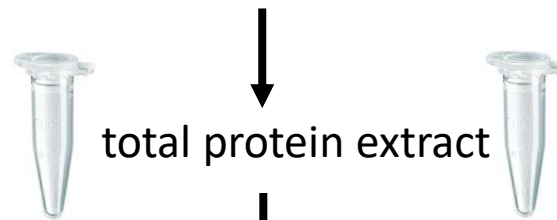




Do protein pink and black interact following a specific treatment?



mock control treatment



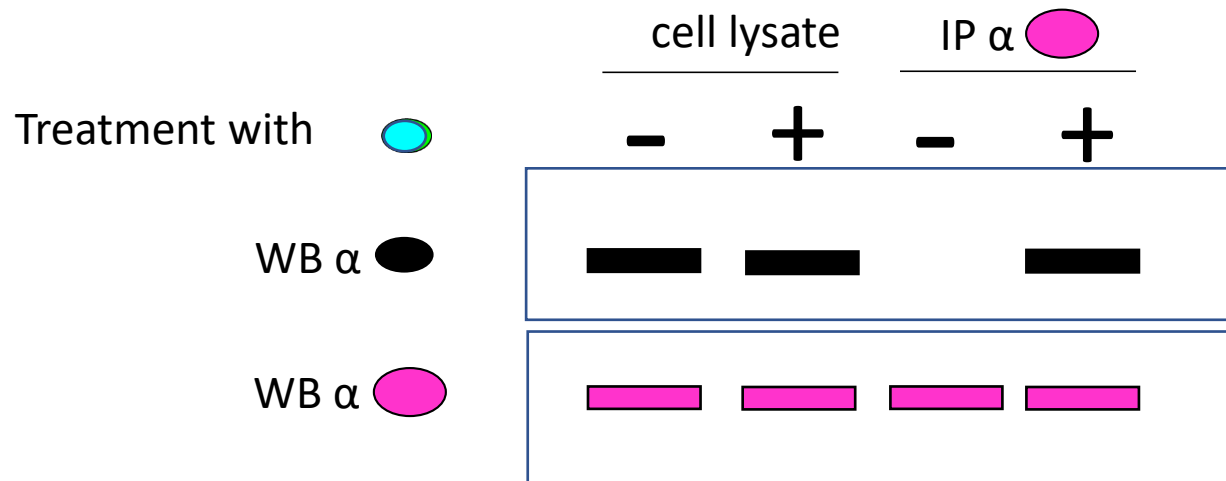
total protein extract

IP α 

Boil, SDS-PAGE

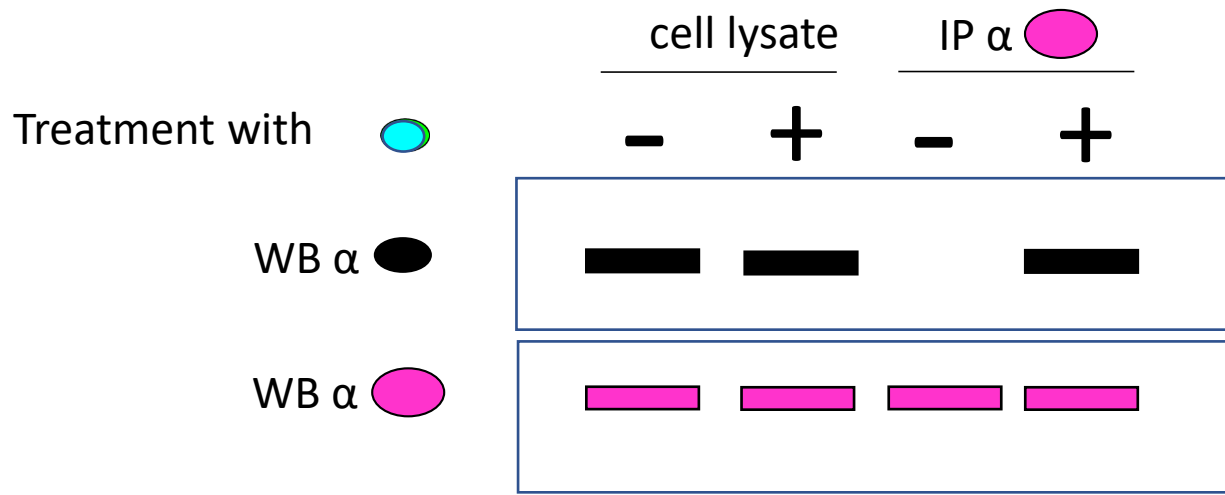
WB α  ?

WB α  ?



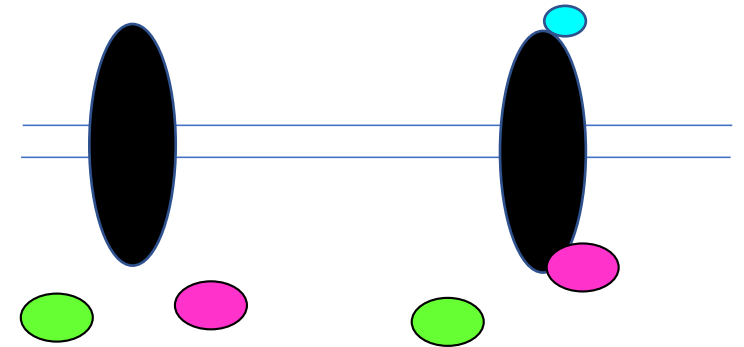
?

Is the antibody used to immunoprecipitate the **pink** protein the same used to detect it in the WB?

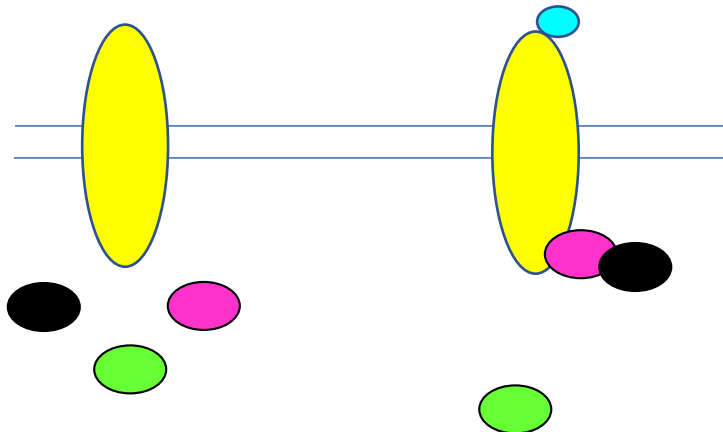


Panel 1

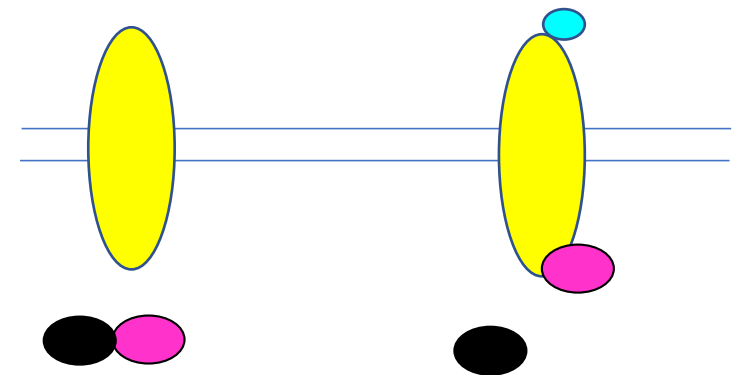
A

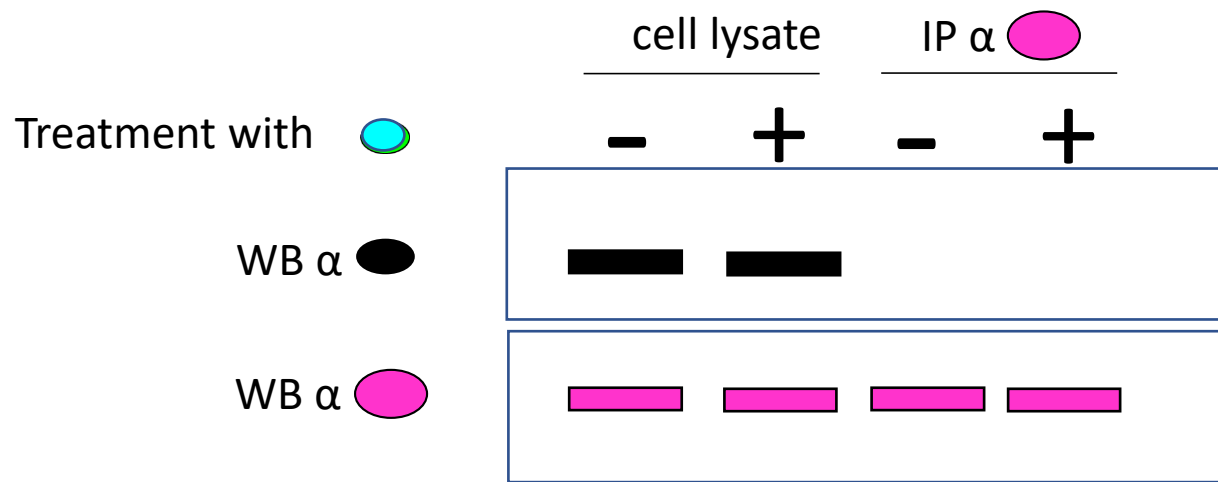


B



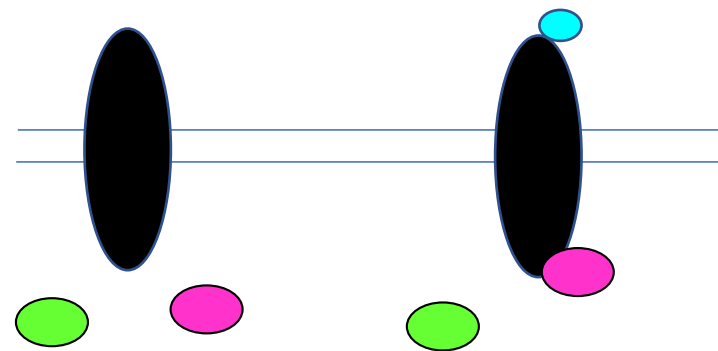
C



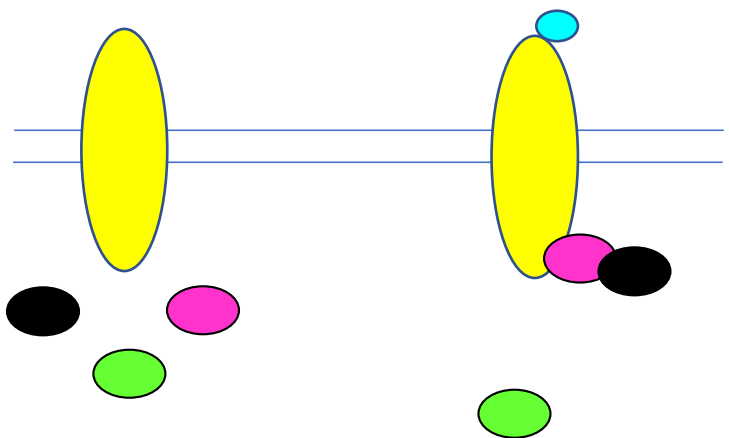


Panel 2

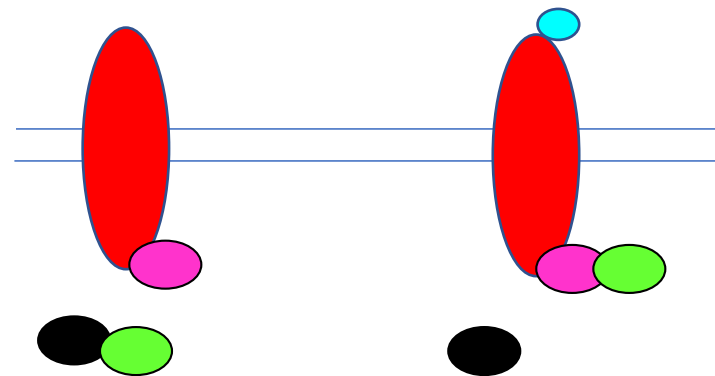
A

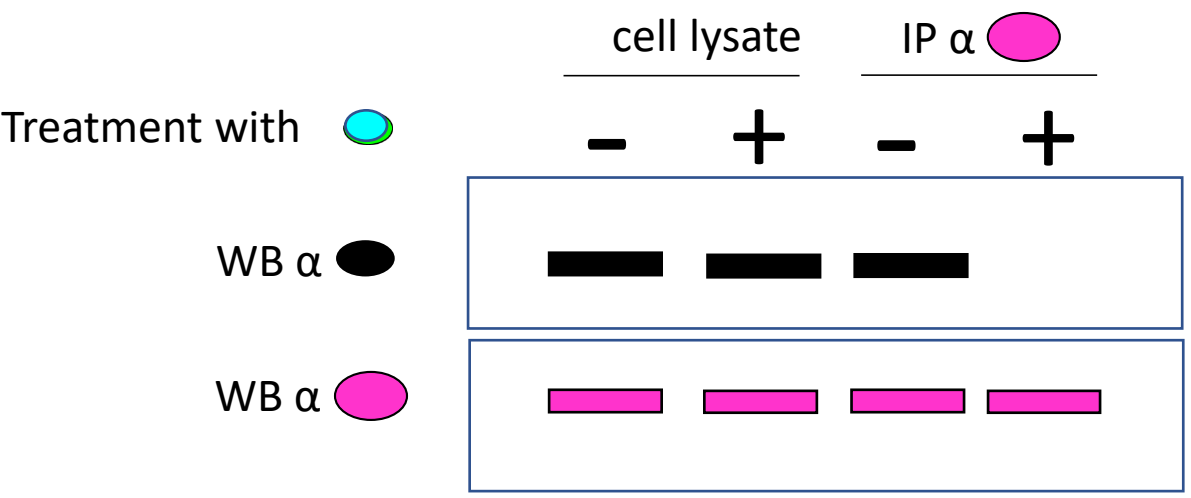


B



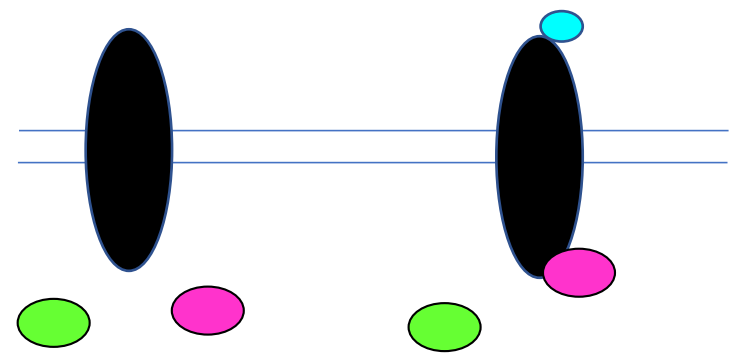
C



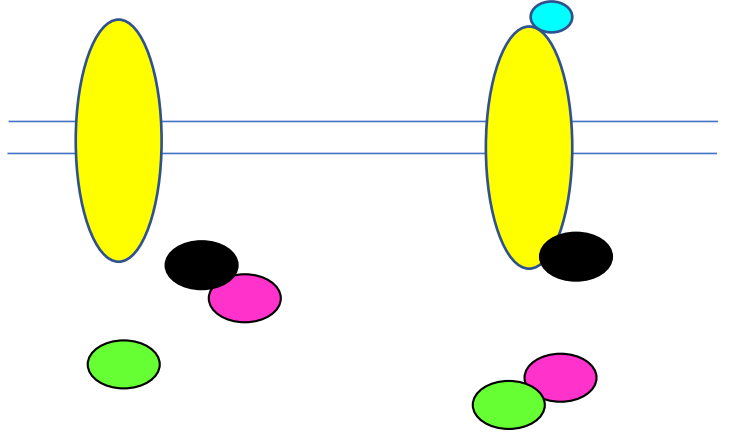


Panel 3

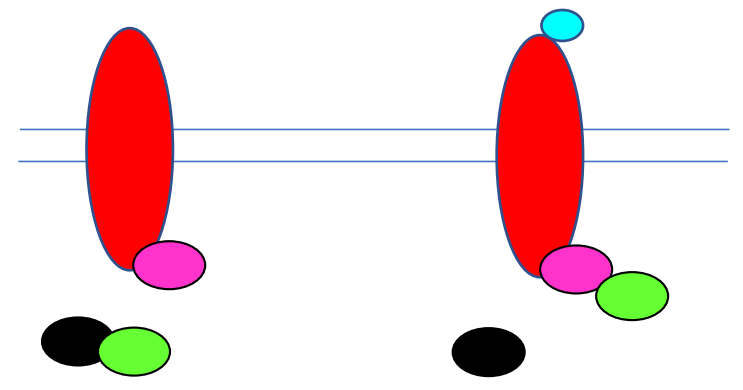
A



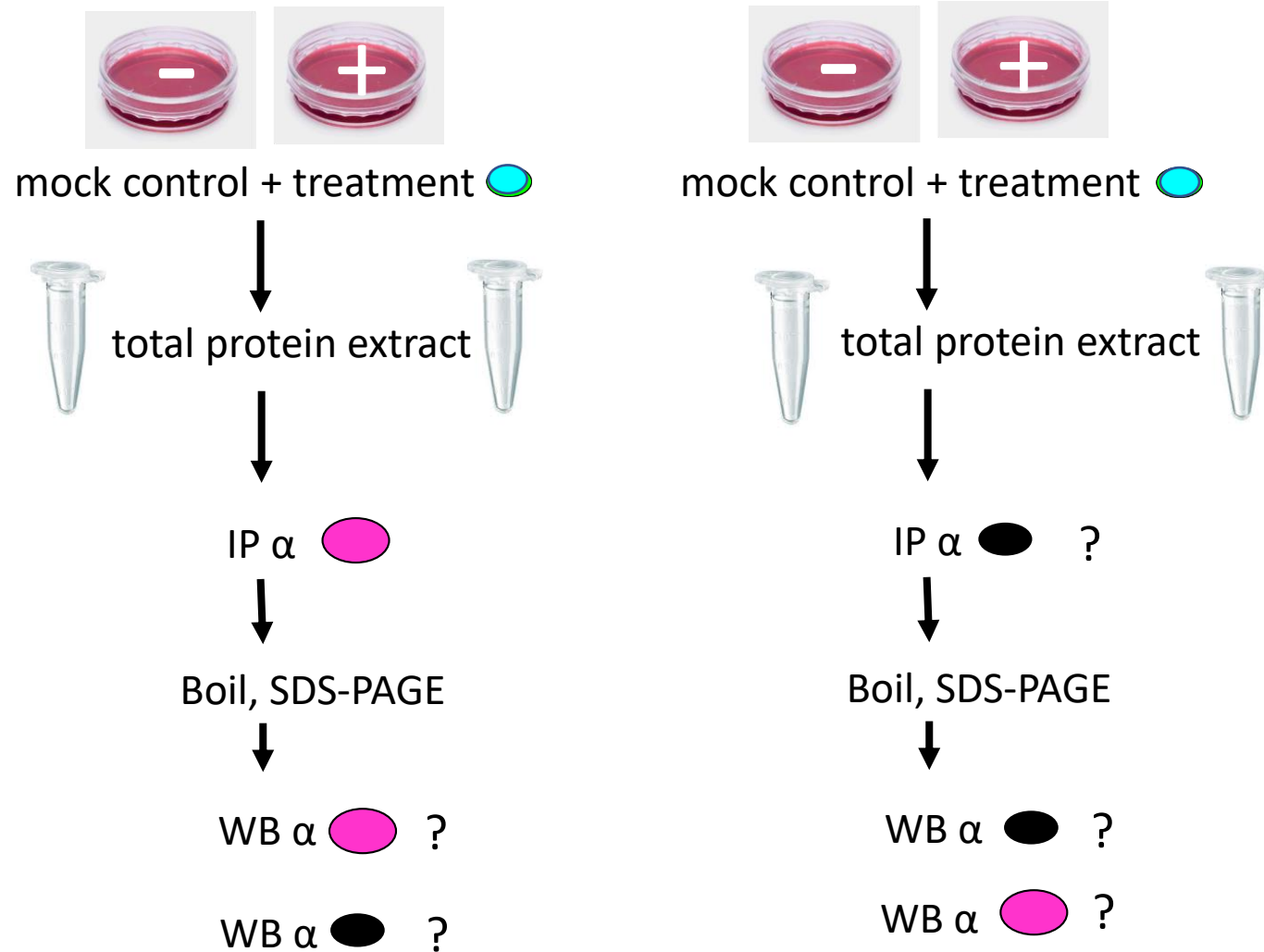
B



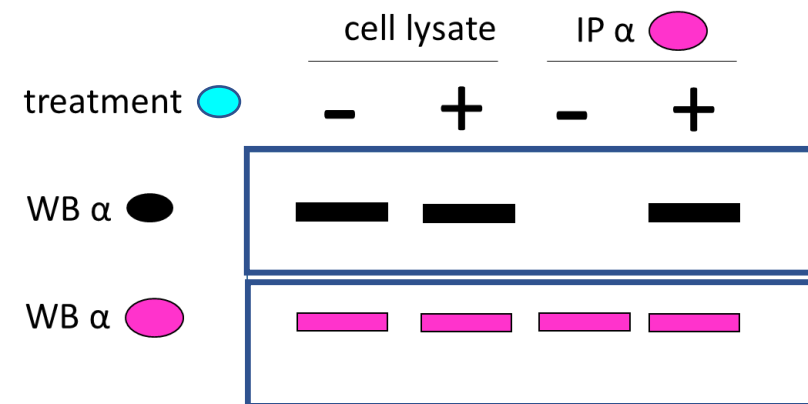
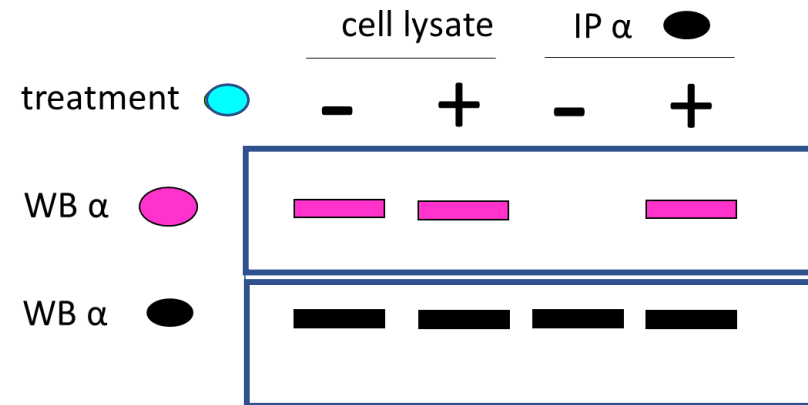
C

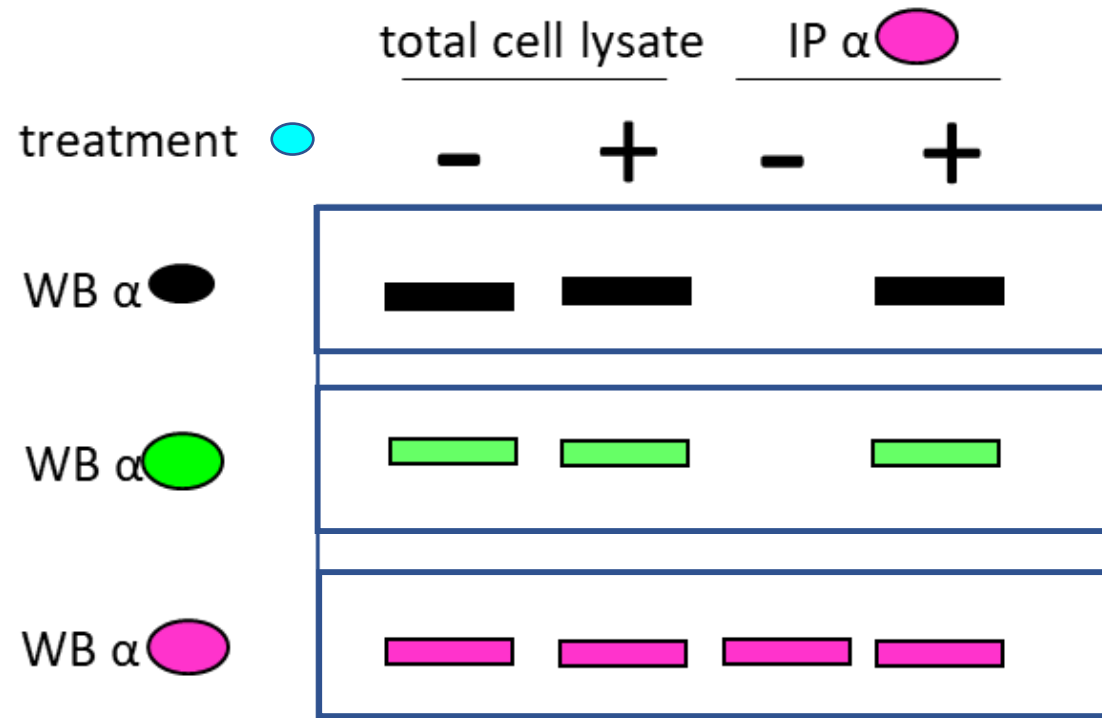


Is it better to immunoprecipitate with an antibody α **pink** protein or α **black** protein?

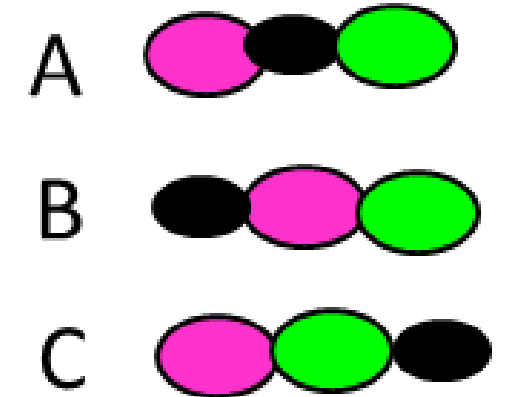
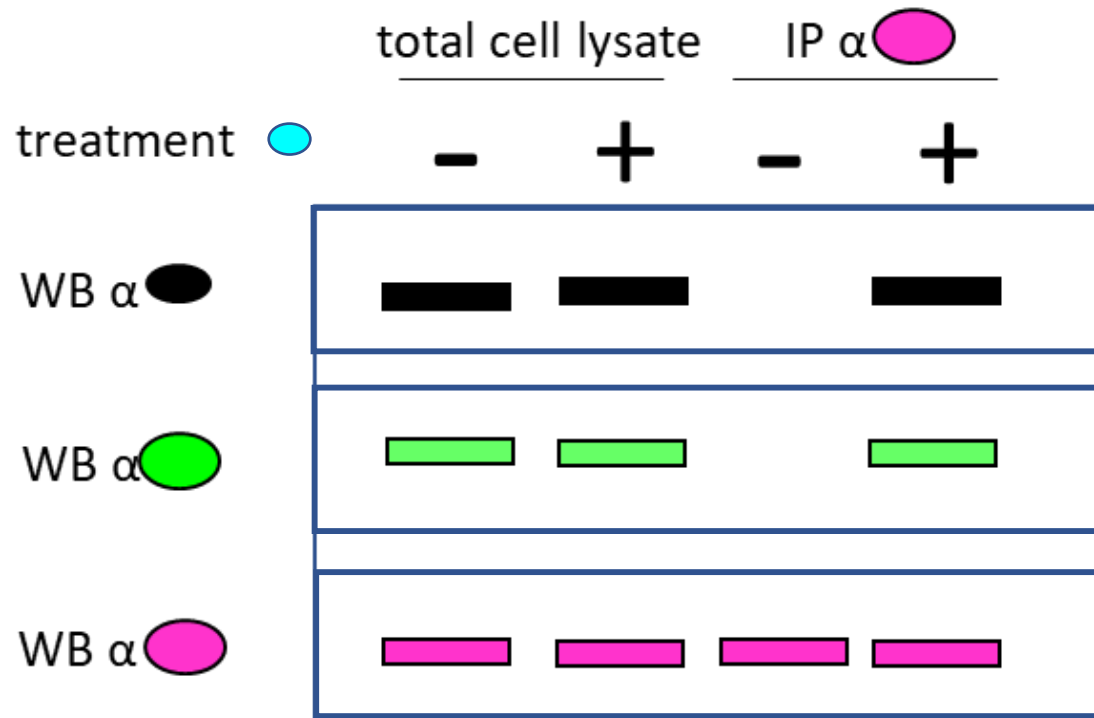


Is it better to immunoprecipitate with an antibody α **pink** protein or α **black** protein?







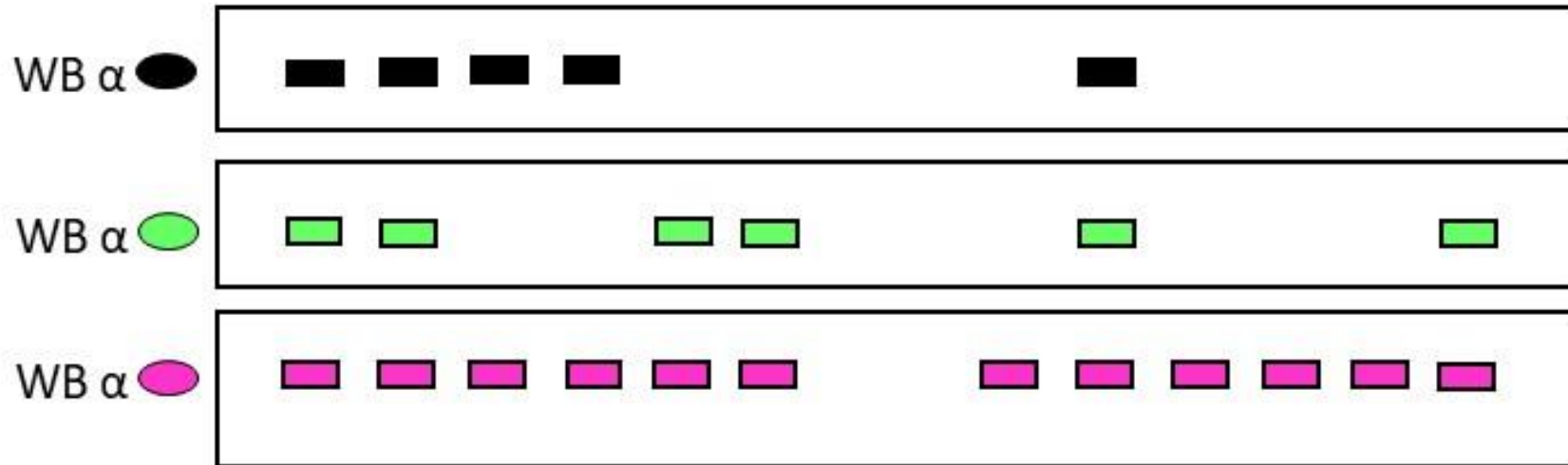


What does it mean?



Try to find a strategy to understand if and how these proteins interact.

	total cell lysate						IP α 					
treatment 	-	+	-	+	-	+	-	+	-	+	-	+
siRNA scramble	+	+	-	-	-	-	+	+	-	-	-	-
siRNA α 	-	-	+	+	-	-	-	-	+	+	-	-
siRNA α 	-	-	-	-	+	+	-	-	-	-	+	+



Panel 4

