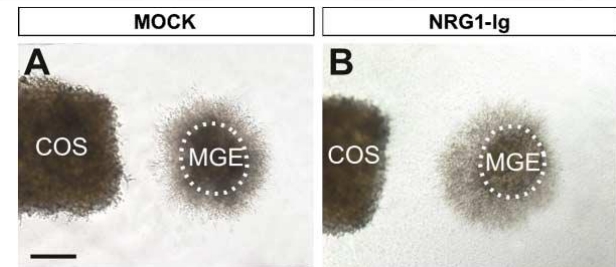
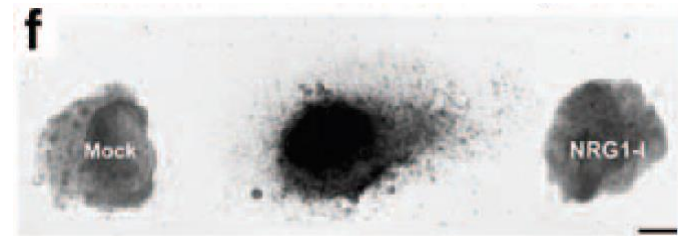
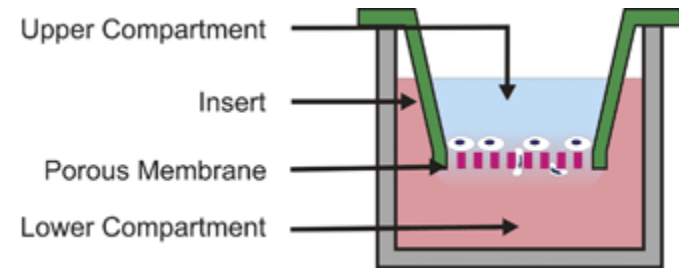
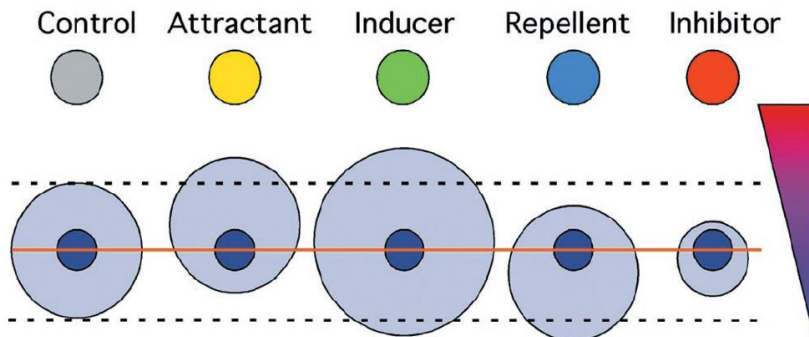
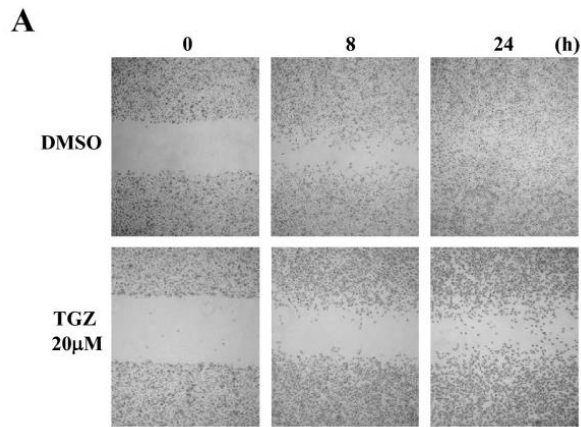


Come si studia la migrazione cellulare?

- descrizione di diversi approcci sperimentali per studiare la migrazione cellulare, *in vitro* ed *in vivo*



Come si studia la migrazione?

- wound healing
- transwell assay/Boyden's chambers
- migrazione neuronale da espianti
- migrazione assonale "turning assay"

Qual è l'influenza del substrato su adesione & migrazione?

- stripe choice assay

Come si studia la migrazione?

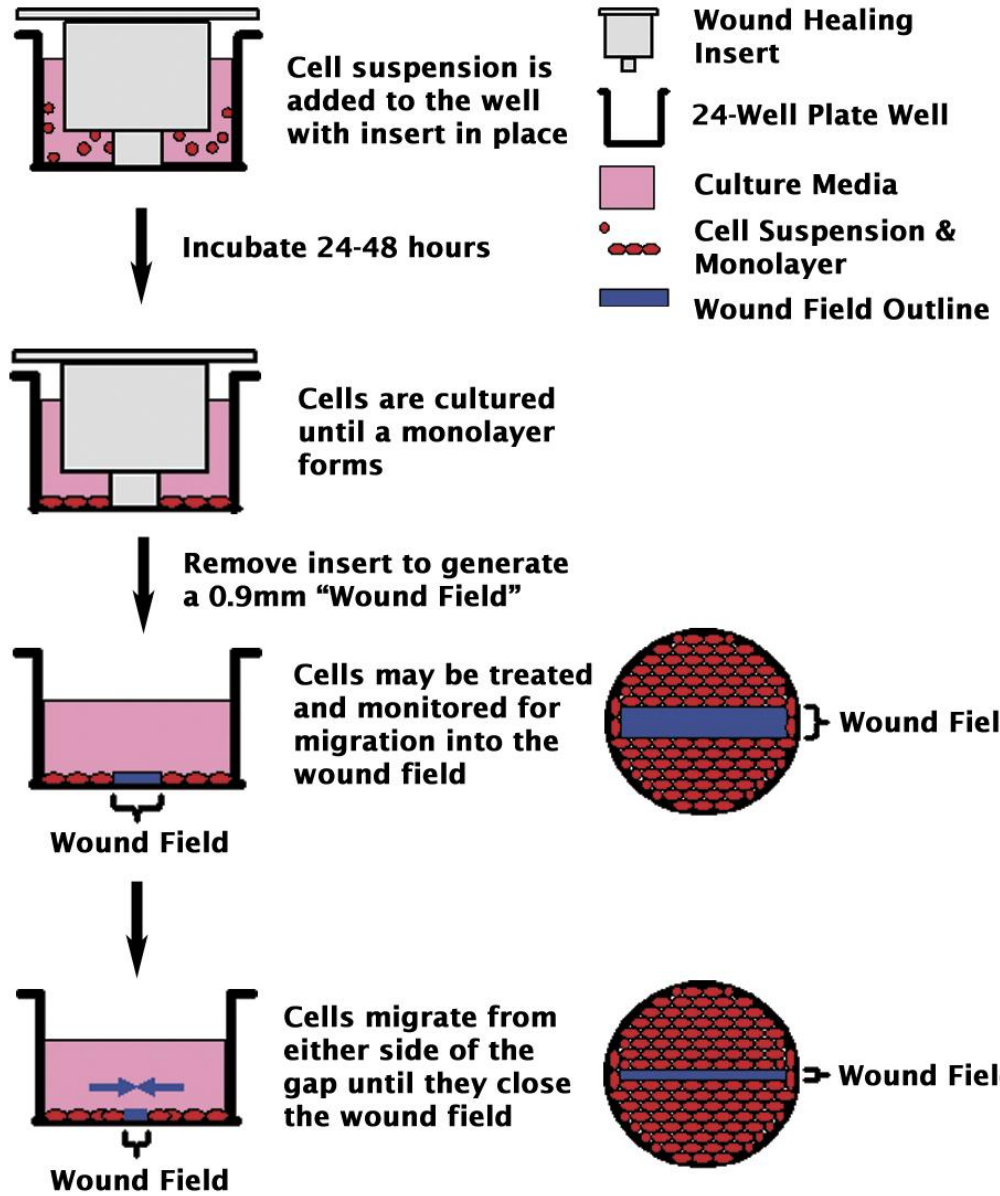
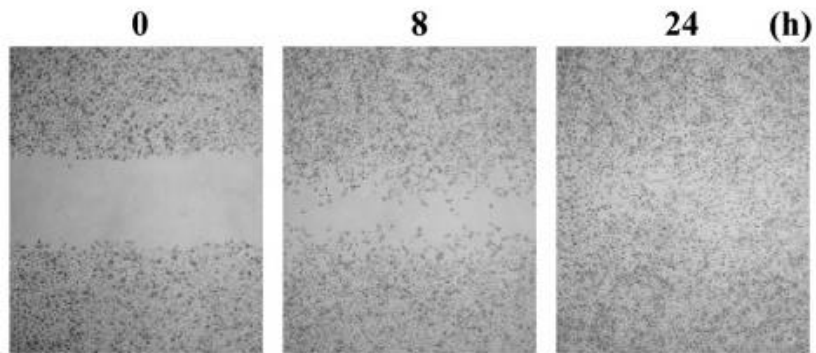
- **wound healing**

- transwell assay/Boyden's chambers
- migrazione neuronale da espianti
- migrazione assonale "turning assay"

Qual è l'influenza del substrato su adesione & migrazione?

- stripe choice assay

WOUND HEALING



WOUND HEALING

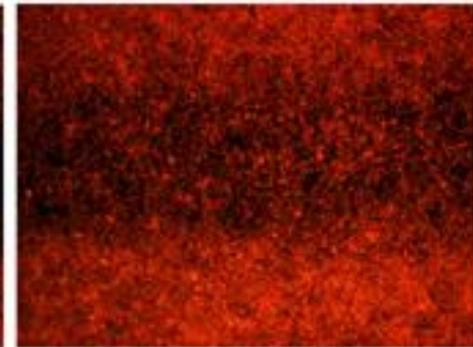
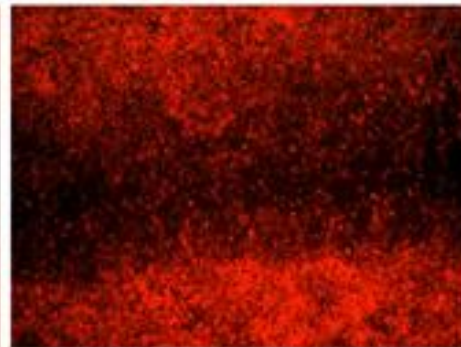
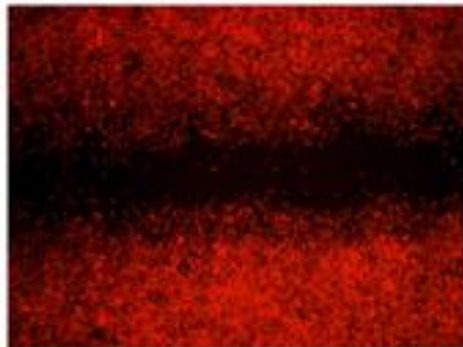
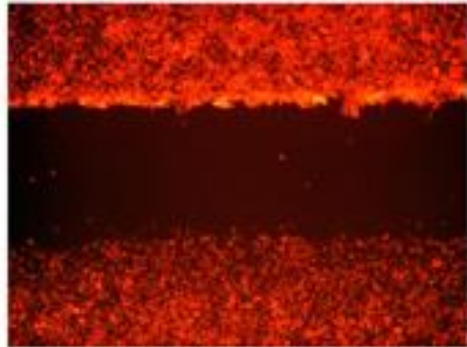
Percent Wound Closure

0%

50%

75%

100%





Each well contains one
~ 0.68 mm Radius™
Gel spot (above image
artificially colored blue)

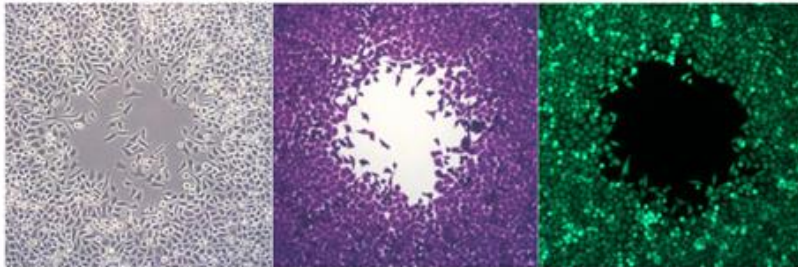
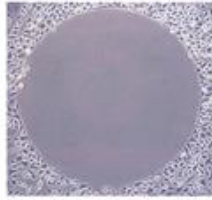


Pretreat desired
wells with Radius™
Gel Pretreatment
Solution

Add cell suspension
to the wells and
allow 4-24 hours for
firm attachment/
spreading

Remove the Radius™
Biocompatible Gel
Layer, exposing the
cell-free area for cell
migration

Cells don't attach
in the Radius™
Biocompatible Gel
Layer area

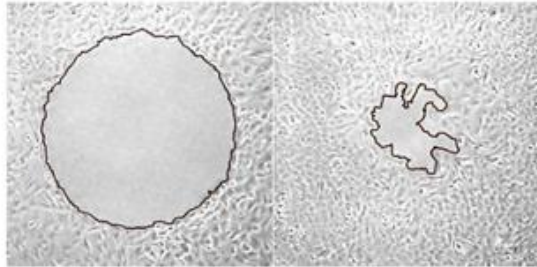


Brightfield

Cell Stain Solution

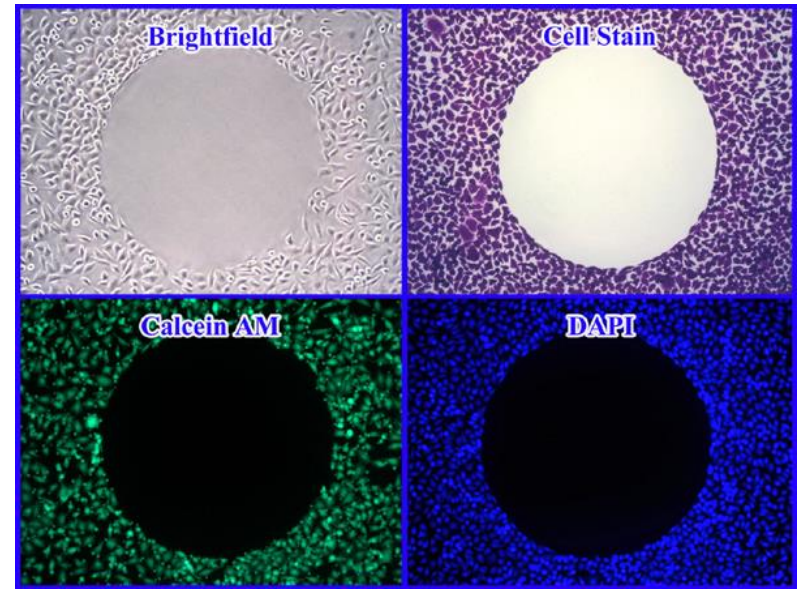
Calcein AM

HCS Analysis



+ Migration
Inhibitor

- Migration
Inhibitor

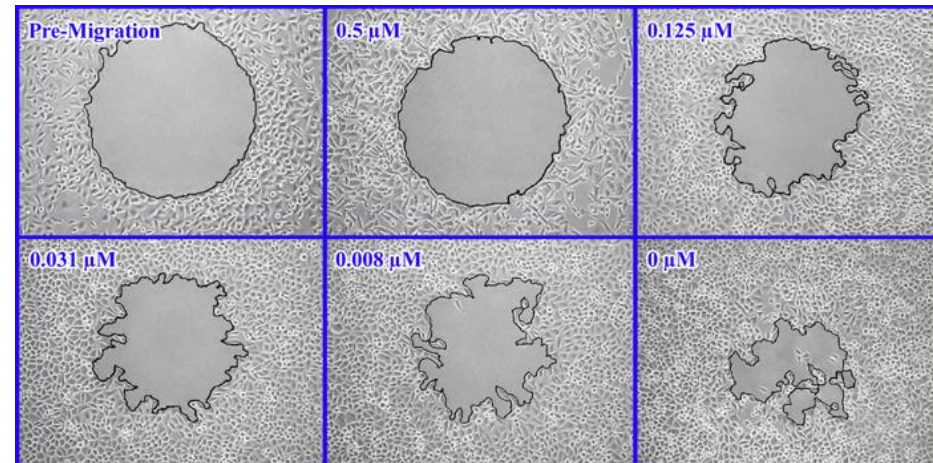


Brightfield

Cell Stain

Calcein AM

DAPI



Pre-Migration

0.5 μ M

0.125 μ M

0.031 μ M

0.008 μ M

0 μ M

Come si studia la migrazione?

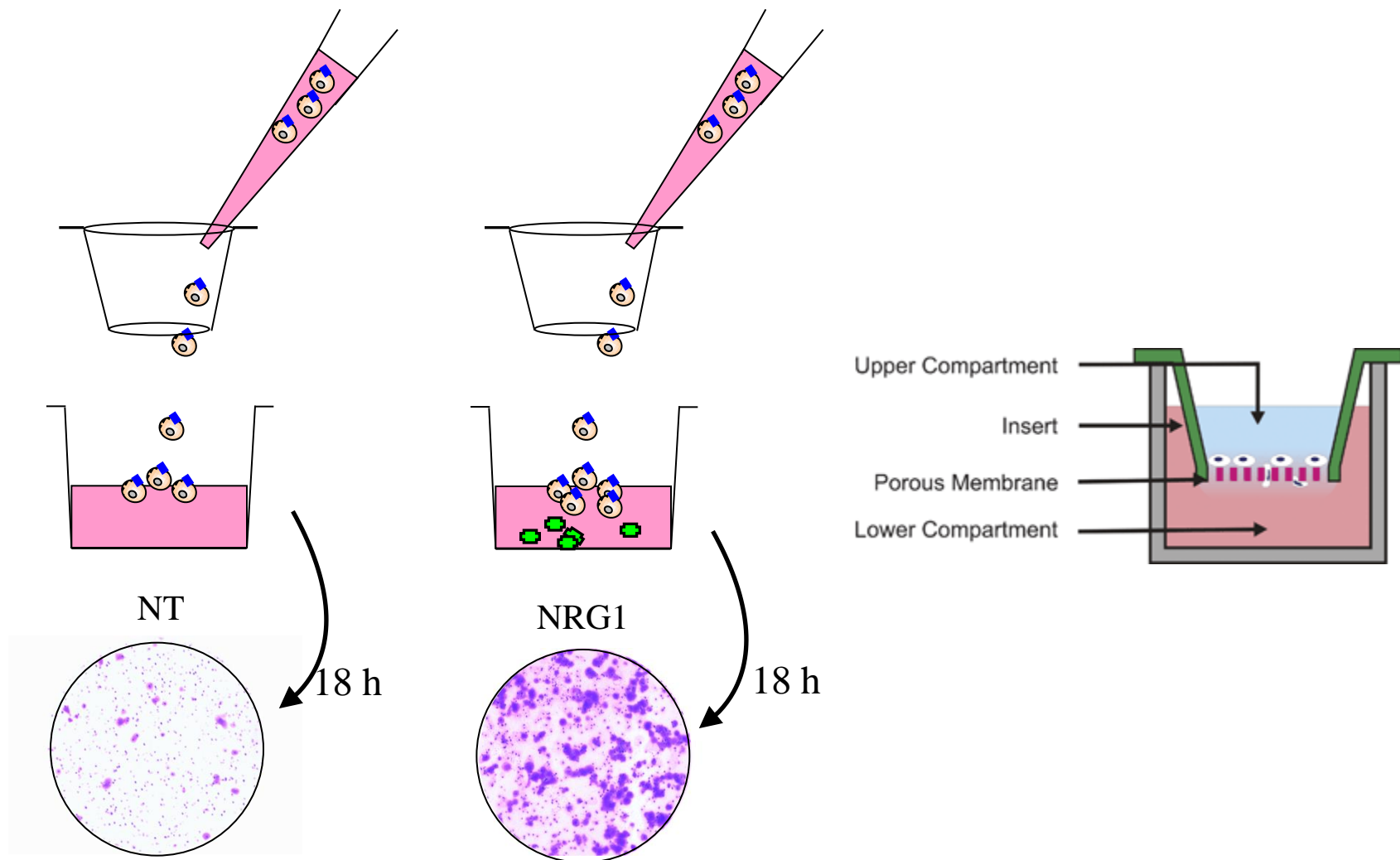
- wound healing
- **transwell assay/Boyden's chambers**
- migrazione neuronale da espianti
- migrazione assonale "turning assay"

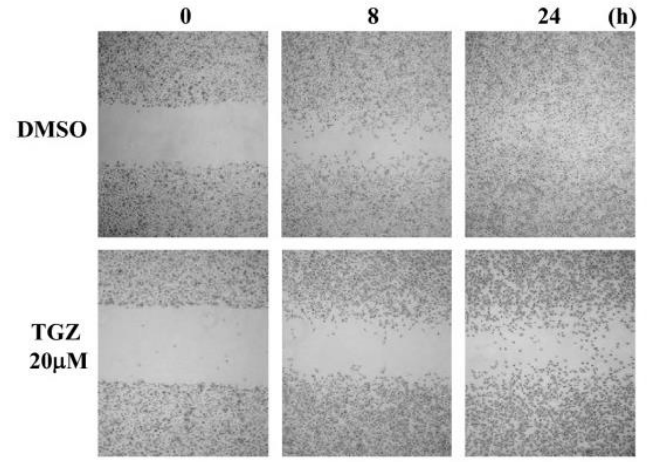
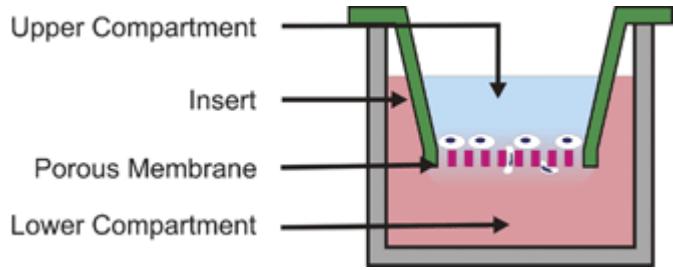
Qual è l'influenza del substrato su adesione & migrazione?

- stripe choice assay

TRANSWELL ASSAY

<http://www.youtube.com/watch?v=6SON7VAA5-k>





	<u>Boyden Chamber/Transwell Assays</u>	<u>2D Migration Gap Closure Assays</u>
Analysis	Quantitative	Qualitative or Quantitative
Detection Time	Endpoint	Endpoint or Real Time
Detection Method	Plate Reader/Microscopy	Microscopy
Cell Compatibility	Choose membrane pore size to match cell type	Any
Chemoattractant Gradient	Yes	No
Sensitivity	Fair	Good
Adaptability to Automation	Poor	Good
Most Suitable Application	Measure effect of chemoattractant on migration rates	Measure differences in migration rates between treated and untreated cells

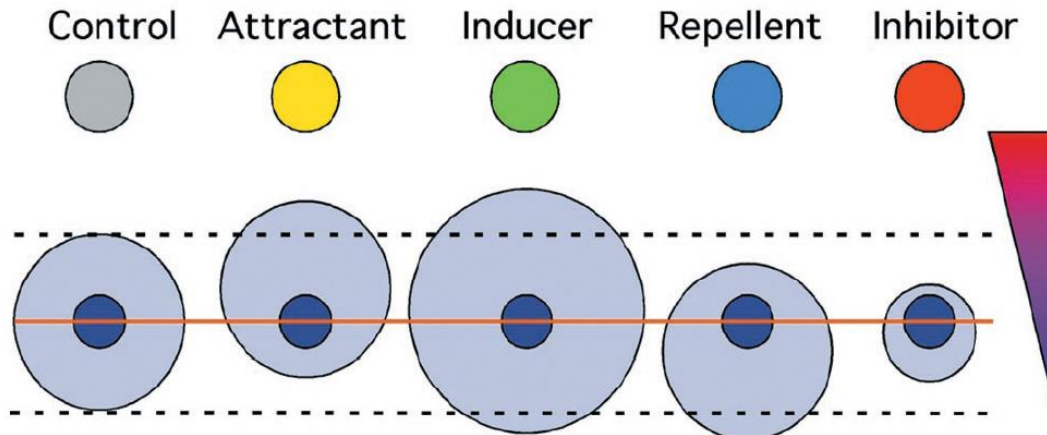
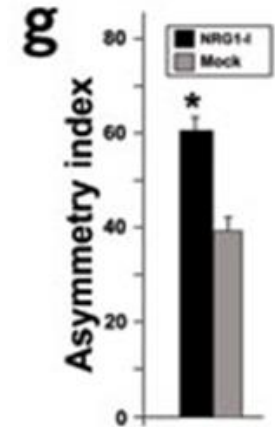
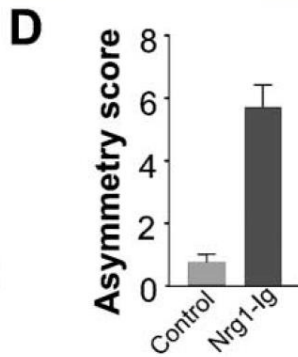
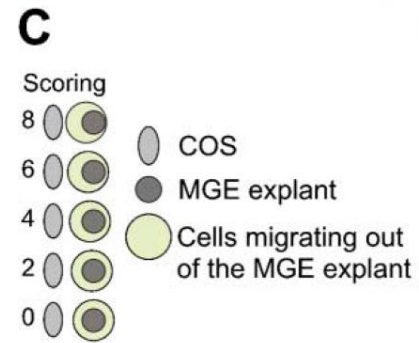
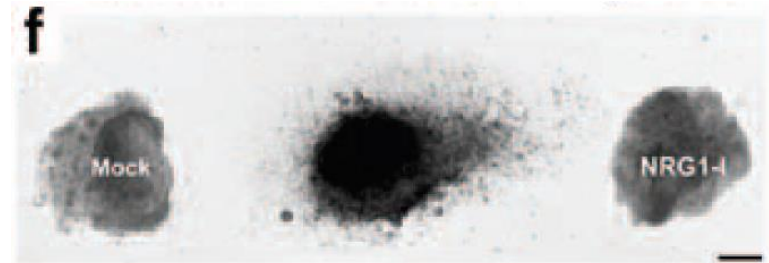
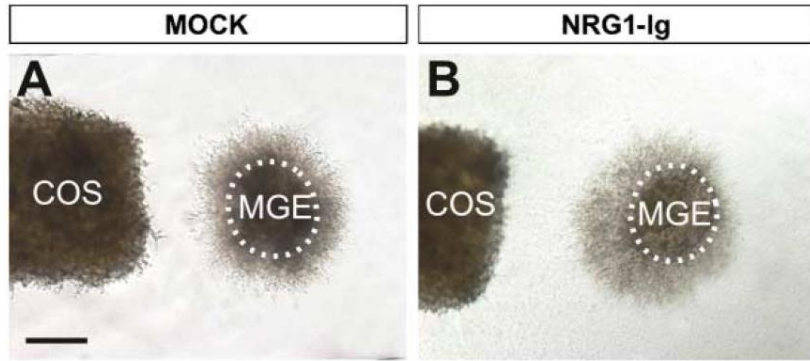
Come si studia la migrazione?

- wound healing
- transwell assay/Boyden's chambers
- **migrazione neuronale da espianti**
- migrazione assonale "turning assay"

Qual è l'influenza del substrato su adesione & migrazione?

- stripe choice assay

MIGRAZIONE DA ESPIANTI



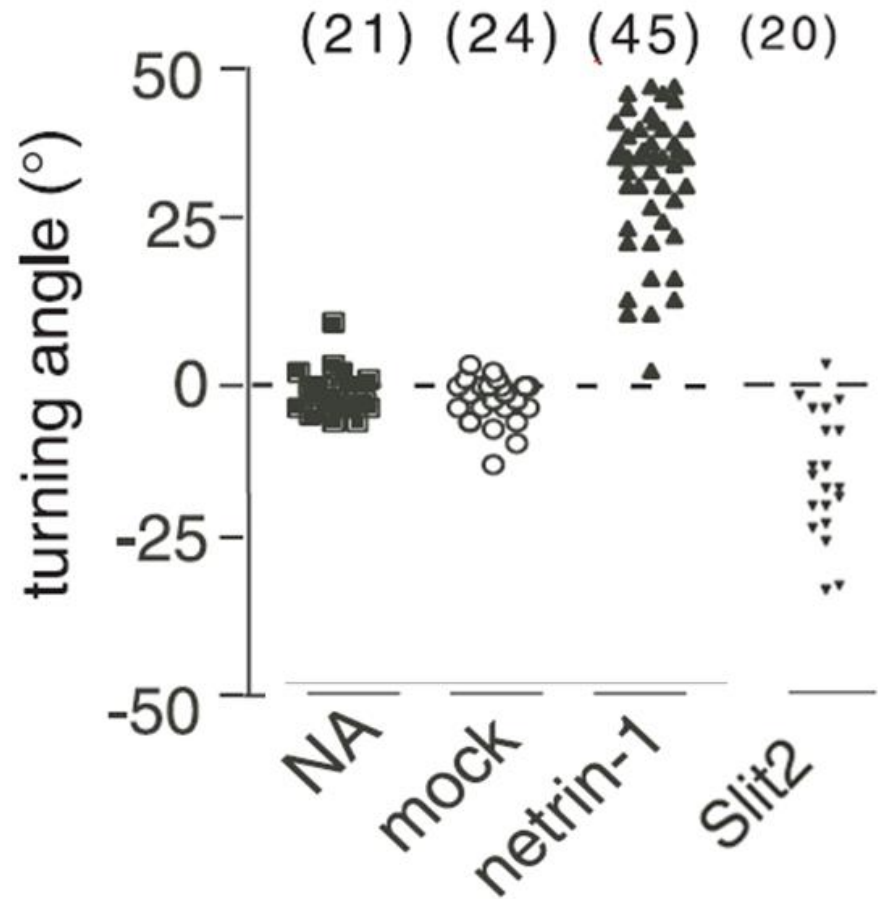
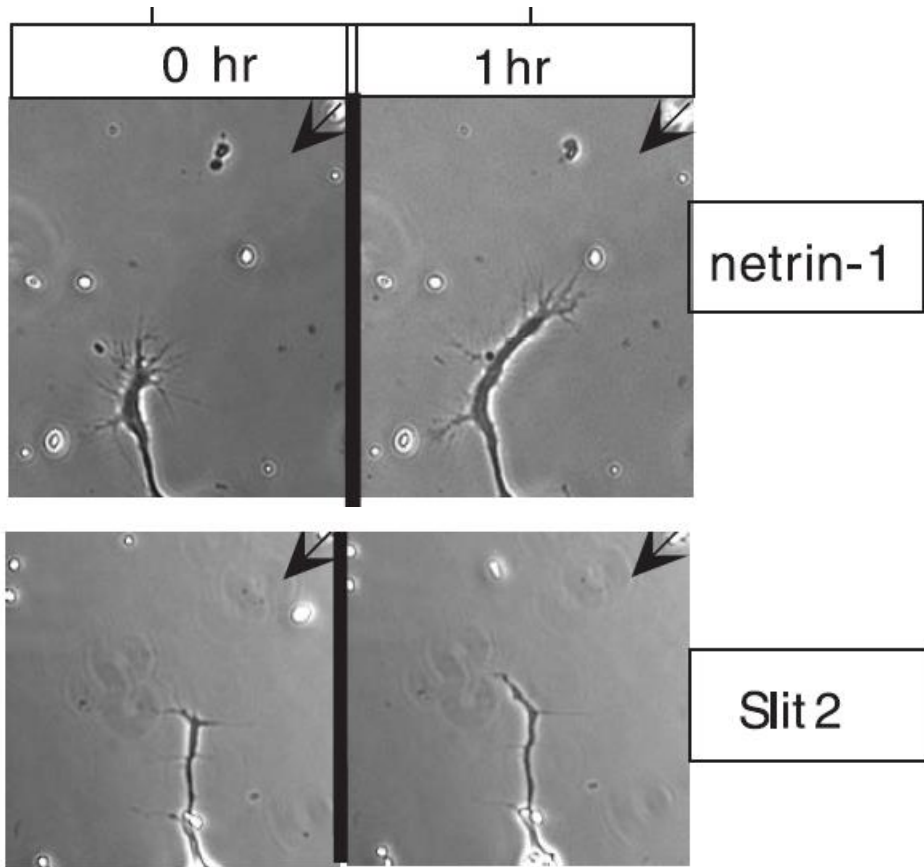
Come si studia la migrazione?

- wound healing
- transwell assay/Boyden's chambers
- migrazione neuronale da espianti
- **migrazione assonale "turning assay"**

Qual è l'influenza del substrato su adesione & migrazione?

- stripe choice assay

SAGGI di “VIRATA” o TURNING ASSAY



Come si studia la migrazione?

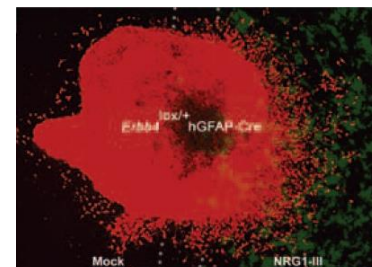
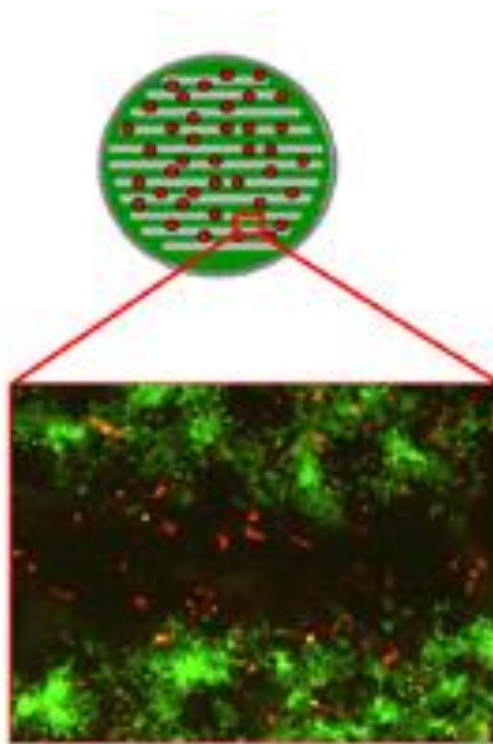
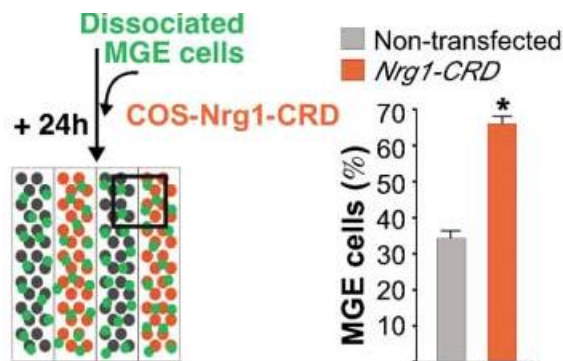
- wound healing
- transwell assay/Boyden's chambers
- migrazione neuronale da espianti
- migrazione assonale "turning assay"

Qual è l'influenza del substrato su adesione & migrazione?

- stripe choice assay

Qual è l'influenza del substrato su adesione & migrazione?

- approcci sperimentali per valutare la preferenza di adesione su un certo substrato



STRIPE CHOICE ASSAY

