



# Integrin signaling in atherosclerosis

Alexandra C. Finney<sup>1</sup> · Karen Y. Stokes<sup>2</sup> · Christopher B. Pattillo<sup>2</sup> ·  
A. Wayne Orr<sup>1,2,3</sup> 

Received: 23 November 2016 / Revised: 24 January 2017 / Accepted: 15 February 2017  
© Springer International Publishing 2017

**Abstract** Atherosclerosis, a chronic lipid-driven inflammatory disease affecting large arteries, represents the primary cause of cardiovascular disease in the world. The local remodeling of the vessel intima during atherosclerosis involves the modulation of vascular cell phenotype, alteration of cell migration and proliferation, and propagation of local extracellular matrix remodeling. All of these responses represent targets of the integrin family of cell adhesion receptors. As such, alterations in integrin signaling affect multiple aspects of atherosclerosis, from the earliest induction of inflammation to the development of advanced fibrotic plaques. Integrin signaling has been shown to regulate endothelial phenotype, facilitate leukocyte homing, affect leukocyte function, and drive smooth muscle fibroproliferative remodeling. In addition, integrin signaling in platelets contributes to the thrombotic complications that typically drive the clinical manifestation of cardiovascular disease. In this review, we examine the current literature on integrin regulation of atherosclerotic plaque development and the suitability of integrins as potential therapeutic targets to limit cardiovascular disease and its complications.

**Keywords** Integrins · Extracellular matrix · Atherosclerosis · Inflammation · Proliferation · Migration

## Introduction

### Atherosclerotic cardiovascular disease

Atherosclerosis, a chronic inflammatory disease of the large arteries, involves the progressive accumulation of lipids, necrotic cell debris, and extracellular matrix proteins in the vessel intima that ultimately results in vessel occlusion or thrombotic complications. Initially, atherosclerotic plaques start as regions of local dysfunction in the endothelial lining of the blood vessel. Deposition of cholesterol [primarily packaged in low-density lipoproteins (LDL)] at these sites drives the accumulation of monocyte-derived macrophages in an attempt to clear the lipid deposits. This lipid-driven inflammatory response drives the formation of a microenvironment rich in oxidized LDL (oxLDL), cytokines, growth factors, and wound-associated extracellular matrix proteins (fibronectin, osteopontin) [1–4] (Fig. 1). These stimuli induce vascular smooth muscle cells in the media to lose their contractile properties, attain a synthetic, fibroproliferative phenotype, and migrate into the vessel intima [5]. While smooth muscle-driven fibrosis can produce stenotic lesions that restrict flow to target organs, smooth muscle remodeling is thought to confer protection against plaque rupture and thrombosis through the formation of a collagen-rich fibrous cap [6, 7].

Current treatments for atherosclerotic cardiovascular disease rely primarily on therapeutics that target systemic risk factors, such as hypercholesterolemia (e.g., statin family of HMG CoA reductase inhibitors). However, a large number of individuals do not show significant clinical

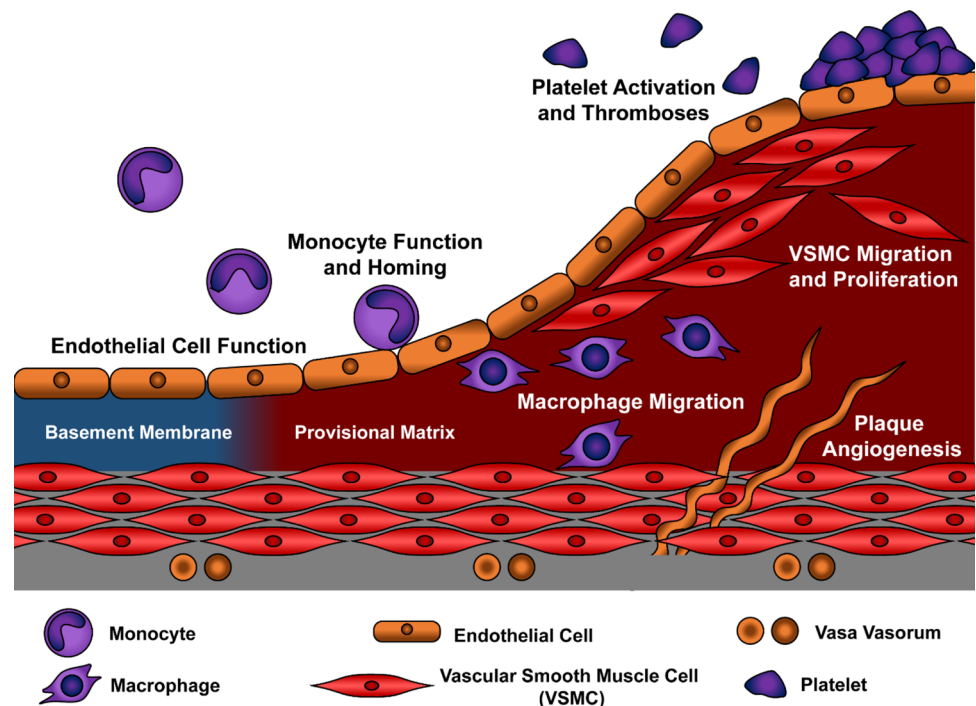
✉ A. Wayne Orr  
aorr@lsuhsc.edu

<sup>1</sup> Department of Cell Biology and Anatomy, Louisiana State University Health Sciences Center – Shreveport, Shreveport, LA 71130, USA

<sup>2</sup> Department of Cellular and Molecular Physiology, Louisiana State University Health Sciences Center – Shreveport, Shreveport, LA 71130, USA

<sup>3</sup> Department of Pathology and Translational Pathobiology, Louisiana State University Health Sciences Center – Shreveport, 1501 Kings Hwy, Shreveport, LA 71130, USA

**Fig. 1** Model for atherosclerotic plaque development. Progression of atherosclerotic plaques from alterations in early endothelial function to the progressive accumulation of macrophages and smooth muscle cells are shown. Intra-plaque angiogenesis in large atherosclerotic lesions provide additional access sites for leukocyte targeting



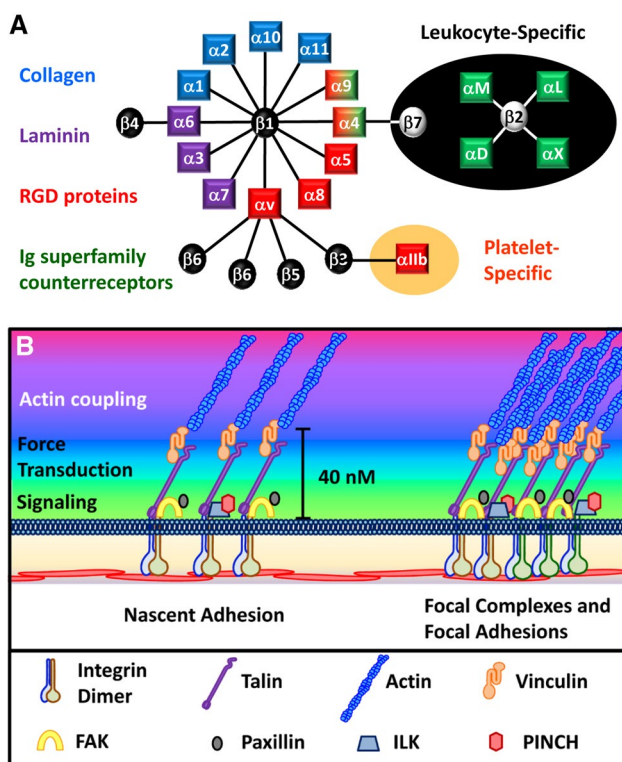
benefit with lipid-lowering therapies, with two-thirds of all patients who receive statin therapy continuing to experience cardiovascular events within a 5-year timeframe [8]. While the disease is unquestionably lipid-driven, other systemic factors or components of the atherosclerotic microenvironment may perpetuate atherosclerotic disease even in the presence of normal plasma lipid levels. Of particular interest, the arterial microenvironment appears to regulate both the localization of where these plaques occur and the sensitivity of cells within the plaque to various atherogenic stimuli. Atherosclerotic lesions develop in arterial regions exposed to turbulent patterns of blood flow, including arterial curvatures, branch points, and bifurcations [9], whereas vascular regions exposed to unidirectional, laminar flow show protection from plaque formation. In addition to local hemodynamics, changes in the composition of the arterial matrix regulate multiple aspects of plaque formation, including lipid deposition, inflammation, and smooth muscle incorporation. The different mechanical properties of these matrix proteins serve to regulate tissue architecture, and the differential activation of cell-matrix receptors tunes cell function to microenvironmental conditions [10, 11].

### Integrin activation and signaling

The integrin family of receptors plays a significant role in cellular crosstalk with its microenvironment [12, 13]. As transmembrane receptors, integrins serve to integrate the internal actomyosin cytoskeleton with extracellular matrix proteins or Ig superfamily counter-receptors [e.g.,

intercellular adhesion molecule-1 (ICAM-1), vascular cell adhesion molecule-1 (VCAM-1)] on adjacent cells [12, 13]. As such, integrins affect cell function through mechanically coupling the cell to the surrounding environment, translating the composition and structure of the microenvironment into intracellular biochemical signals, and facilitating certain cell-cell interactions [13]. The mammalian cadre of integrins includes 18  $\alpha$  and 8  $\beta$  subunits that form 24 distinct heterodimers, which can be divided by ligand affinity and cell type-restricted expression patterns (Fig. 2a) [12]. Collagens and laminins comprise a bulk of the integrin-binding matrix proteins in adult tissues, and the collagen-binding integrins ( $\alpha 1\beta 1$ ,  $\alpha 2\beta 1$ ,  $\alpha 10\beta 1$ ,  $\alpha 11\beta 1$ ) and laminin-binding integrins ( $\alpha 3\beta 1$ ,  $\alpha 6\beta 1$ ,  $\alpha 7\beta 1$ ,  $\alpha 6\beta 4$ ) are typically associated with a quiescent cell phenotype. In contrast, provisional matrix proteins, such as fibronectin, fibrinogen, and vitronectin, show enhanced production and deposition during tissue remodeling responses, and the integrins that bind to the RGD sequence in these proteins ( $\alpha 5\beta 1$ ,  $\alpha 8\beta 1$ ,  $\alpha \nu\beta 1$ ,  $\alpha \nu\beta 3$ ,  $\alpha \nu\beta 5$ ) are classically associated with enhanced cell proliferation and migration [12, 14]. Leukocyte-specific integrins ( $\alpha L\beta 2$ ,  $\alpha M\beta 2$ ,  $\alpha X\beta 2$ ,  $\alpha D\beta 2$ ,  $\alpha 4\beta 7$ ) interact with Ig superfamily counter-receptors expressed on activated endothelial cells, whereas the platelet-specific integrin  $\alpha IIb\beta 3$  classically interacts with the RGD sequence in fibrin [12, 15, 16].

While integrins do not possess any intrinsic enzymatic activity, integrin heterodimers mediate their mechanical and signaling functions through the recruitment of a vast array of proteins that assemble into large and functionally



**Fig. 2** Vascular integrin signaling. **a** The 24 mammalian integrin dimers are shown. *Shading* indicates their ligand binding specificity for collagen (blue), laminin (purple), or RGD motif-containing proteins (red), or their leukocyte-specific expression pattern (green). **b** Structure of integrin signaling complexes with their signaling, force transduction, and actin coupling layers

diverse complexes [17, 18]. Integrin ligation promotes the formation of nascent adhesions composed of loosely clustered integrin dimers and selects signaling and actin-binding proteins (Fig. 2b). These nascent adhesions converge to form higher order complexes at the end of contractile actin fibers. Based on the size, location, and composition, these adhesion sites can be termed focal complexes (smaller, linked to small actin bundles) or focal adhesions (larger, linked to actin stress fibers) (Fig. 2b). The application of force to integrin adhesions, either through stretching of the extracellular matrix or enhanced intracellular actomyosin contractility, results in a rapid structural reinforcement of adhesion sites, with enhanced actin filament bundling, increased recruitment of cytoskeletal adaptor proteins that link integrins to actin filaments (e.g., talin1, vinculin), and increased density of integrins within the adhesion site [13]. Both focal complexes and focal adhesions require myosin contractility to maintain their structure and rapidly disassemble in the presence of myosin inhibitors [19]. Additionally, application of force activates a variety of integrin-targeted signaling proteins that convert the physical force into intracellular biochemical signals, a process termed

mechanotransduction [13, 20]. Super resolution microscopy identified an organization of these adhesion proteins into a membrane-proximal layer rich in signaling proteins [focal adhesion kinase (FAK), integrin-linked kinase (ILK)], a force transduction layer containing proteins involved in force-dependent reinforcement of adhesions (talin1, vinculin), and an actin regulation layer containing a variety of actin-binding proteins (zyxin,  $\alpha$ -actinin) [21]. Together, this protein complex provides a 40-nm gap between the integrin tail and the actin filaments. These integrin clusters form a signaling hub at these focal adhesion sites, which can synergize with other extracellular stimuli such as growth factors to regulate cell function [17, 18].

Recent advances in proteomics have provided insight into the mechanisms of integrin signaling [18]. Proteomic analysis of isolated integrin complexes identified multiple cytoskeletal adaptors, Ser/Thr and Tyr kinases, signaling adaptor proteins, and guanine nucleotide exchange factors (GEFs) and GTPase-activating proteins (GAPs) for the Rho family GTPases. However, these studies have also uncovered unexpected recruitment of proteins involved in RNA translation, cellular metabolism, and membrane trafficking. Multiple studies have shown that both the integrin dimer involved and the force applied to the integrin play significant roles in determining which proteins are recruited [22–25]. These studies suggest that recruitment of certain proteins may be conserved among multiple integrins, and these tend to be proteins involved in cytoskeletal linkage, such as talin1, vinculin, filamin, kindlin, and VASP [18]. In contrast, recruitment of specific signaling proteins appears to be more integrin-specific. Ligation of  $\alpha 5 \beta 1$  recruits higher levels of the ILK-PINCH-PARVIN complex and stimulates RhoA/ROCK-dependent myosin contractility [26]. However, ligation of  $\alpha v$  integrin dimers ( $\alpha v \beta 3$ ,  $\alpha v \beta 5$ ) recruits Src and the Rho GEF (GEF-H1) resulting in high levels of RhoA activity but minimal myosin phosphorylation and tractional force [23]. Ligation of both  $\alpha 5 \beta 1$  and  $\alpha v$  integrin dimers is required for maximal myosin phosphorylation and cellular responses to increased substrate stiffness, suggesting that both integrins play functionally distinct but complementary roles in this response [23]. One weakness of the current proteomic approaches has been the concentration on a limited subset of integrins, as all of the previously mentioned studies focus only on  $\alpha 4 \beta 1$ ,  $\alpha 5 \beta 1$ ,  $\alpha v \beta 3$ , and  $\alpha v \beta 5$  signaling.

In nonadherent cell types, such as platelets and leukocytes, integrins mostly exist in a bent conformation that sequesters the ligand binding pocket close to the cell surface and away from potential ligands [27, 28]. This structure is maintained through a salt bridge that forms between membrane-proximal regions of the  $\alpha$  and  $\beta$  cytoplasmic tail [27, 28]. Integrin activation, a transition from a low affinity bent conformation to a high affinity extended confirmation,

is induced by “inside-out” signaling pathways, signals inside the cell that disrupt this salt bridge and alter the integrin conformation on the outside of the cell. This alteration in integrin function critically regulates rapid induction of adhesion in circulating platelets and leukocytes to induce thrombosis and leukocyte homing, respectively [15, 16]. Also, rapid induction of integrin activation in adherent cells promotes a robust induction of integrin-specific signaling that can regulate cell function [29–31]. In the subsequent sections, we will examine the current literature related to how integrin signaling contributes to the various processes involved in atherosclerotic plaque formation and the potential for integrin-based therapeutics to modulate these responses.

### Integrins in endothelial cell function

Like all epithelia, the vessel’s endothelial cell layer resides on a basement membrane composed of collagen IV, laminin, nidogen, perlecan, and other proteoglycans [32]. Macrovascular endothelial cells express multiple basement membrane-binding integrins (Table 1), including  $\alpha 2\beta 1$ ,  $\alpha 3\beta 1$ ,  $\alpha 6\beta 1$ , and  $\alpha 6\beta 4$ , and signaling through these integrins is widely associated with a quiescent endothelial cell phenotype [14, 33, 34]. During the early stages of atherosclerosis, provisional matrix proteins, such as the RGD-containing proteins fibronectin, fibrinogen, and thrombospondin-1, show significantly enhanced deposition within the endothelial cell matrix [31, 35, 36]. These provisional matrix proteins bind to a different subset of endothelial integrins (Table 1), including  $\alpha 5\beta 1$ ,  $\alpha \nu \beta 3$ , and  $\alpha \nu \beta 5$ , with signaling through these integrins associated

with actin remodeling responses and endothelial activation [14, 33, 34]. Deposition of provisional matrix proteins into the subendothelial basement membrane may involve changes in endothelial permeability, resulting in the leak of provisional matrix proteins in the plasma into the vessel wall, or changes in endothelial gene expression to enhance deposition of endothelial cell matrices. Deletion of plasma fibronectin reduces fibronectin deposition during early atherogenesis [37], and atherosclerosis-prone sites show enhanced deposition of fibrinogen, which is not produced by vascular cells [31]. In partial carotid ligation models of disturbed flow, fibronectin deposition can only be reduced by global fibronectin knockout and not by deletion in the cells of the vascular wall (both endothelial cells and smooth muscle cells) [38], suggesting that leak of plasma fibronectin plays a primary role in fibronectin deposition in this model. However, atherosclerosis-prone sites also show enhanced endothelial fibronectin expression [36, 39] and deposition of fibronectin splice variants only expressed in cellular but not plasma fibronectin [40].

### Integrin signaling in endothelial cell activation

In quiescent vessels, the endothelial layer regulates vascular tone, provides an anti-thrombotic surface, and forms a tight barrier to restrict the passage of blood components into surrounding tissue [41]. Activation of the endothelial cell layer during inflammatory responses involves a phenotypic transition that increases vascular permeability and enhances the expression of leukocyte counter-receptors (e.g., ICAM-1, VCAM-1), proinflammatory cytokines (tumor necrosis factor  $\alpha$  (TNF $\alpha$ ), interleukin-1B (IL-1 $\beta$ )), and procoagulant molecules (tissue factor (TF)) [41].

**Table 1** Endothelial integrins in atherosclerotic disease

Phenotype	Matrix	Integrins	Known functions in atherosclerosis models	Refs.
Quiescent	Collagen IV	$\alpha 2\beta 1$ , $\alpha 10\beta 1$	Enhanced flow-induced PKA signaling	[61, 63, 247]
			Enhanced flow-induced eNOS phosphorylation	[62]
Endothelial activation	Laminin-8/10	$\alpha 3\beta 1$ , $\alpha 6\beta 1$ , $\alpha 6\beta 4$	None described	
	Fibronectin	$\alpha 5\beta 1$	Inhibition of PKA signaling	[52]
			Flow-induced NF- $\kappa$ B activation	[51, 52]
			ICAM-1/VCAM-1 expression	
			Inflammasome Activation	[51]
			oxLDL-induced NF- $\kappa$ B activation	[52, 53]
Fibronectin, Vitronectin, Fibrinogen, Thrombospondin-1	$\alpha \nu \beta 3$	Atherosclerotic angiogenesis	[77, 85]	
		Flow-induced NF- $\kappa$ B activation	[50]	
		ICAM-1/VCAM-1 expression		
Vitronectin	$\alpha \nu \beta 5$	Flow-induced PAK2 activation; Permeability	[34, 49]	
		Atherosclerotic angiogenesis	[77, 85]	
			None described	

Molecularly, endothelial activation represents the first discernable sign of local atherosclerotic susceptibility and is maintained during subsequent stages of atherosclerotic progression [42]. Several stimuli promote endothelial activation, including mechanical stress, oxidized LDL (oxLDL), proinflammatory cytokines (e.g., TNF $\alpha$ , IL-1 $\beta$ ), and the bacterial endotoxin LPS [41]. Much of the reprogramming in endothelial gene expression can be attributed to the proinflammatory transcription factor nuclear factor- $\kappa$ B (NF- $\kappa$ B) [43, 44]. The NF- $\kappa$ B family of homodimeric and heterodimeric transcription factors is maintained in an inactive state in the cytoplasm but translocates to the nucleus upon activation in response to a variety of endothelial cell activators [43]. Enhanced expression and nuclear localization of the NF- $\kappa$ B p65 subunit (hereafter NF- $\kappa$ B) can be observed at atherosclerosis-prone sites prior to the initiation of plaque formation [43, 44], and preventing NF- $\kappa$ B-driven VCAM-1 expression significantly reduces atherosclerotic plaque formation [43, 45].

Endothelial cells sense the frictional shear stress generated by blood flow resulting in integrin activation and ligation-dependent signaling [9, 20, 46]. Since different integrins activate disparate signaling responses, the endothelial response to flow differs based on the composition of the subendothelial matrix. Shear-induced ligation of provisional matrix-binding integrins results in activation of the Rac effector p21-activated kinase (PAK) which promotes activation of proinflammatory signaling (NF- $\kappa$ B, JNK), proinflammatory gene expression (ICAM-1, VCAM-1), and endothelial permeability [31, 47–49]. Fibronectin appears to play a major role in this response, as deleting fibronectin expression in the mouse plasma reduces PAK and NF- $\kappa$ B activation at sites of disturbed flow in vivo, corresponding to reduced plaque formation [37]. While shear stress activates multiple provisional matrix-binding integrins ( $\alpha$ 5 $\beta$ 1,  $\alpha$ v $\beta$ 3 integrins), several groups have shown that inhibiting  $\alpha$ v $\beta$ 3 is sufficient to prevent proinflammatory signaling (PAK, NF- $\kappa$ B) on fibronectin [34, 50]. Furthermore, mice treated with  $\alpha$ v integrin inhibitors and mice deficient in endothelial  $\alpha$ v expression show reduced proinflammatory responses at both sites of endogenous disturbed flow and induced disturbed flow using the partial carotid ligation model [34]. In contrast to  $\alpha$ v $\beta$ 3, differing reports exist on the signaling through  $\alpha$ 5 $\beta$ 1 in the endothelial response to flow. While Chen et al. showed no effect of  $\alpha$ 5 $\beta$ 1 inhibition or  $\alpha$ 5 knockdown on the endothelial response to flow [34], Sun et al. demonstrated that  $\alpha$ 5 blocking antibodies and siRNA reduced oscillatory flow-induced ICAM-1 and VCAM-1 expression associated with reduced inflammatory activation and mature IL-1 $\beta$  production [51]. In addition, Yun et al. demonstrated that endothelial expression of chimeric integrins with the  $\alpha$ 5 extracellular domain and the  $\alpha$ 2 intracellular domain show reduced NF- $\kappa$ B activation.

A potential confounding factor in these studies is the role of  $\alpha$ 5 $\beta$ 1 in fibronectin deposition, suggesting that inhibiting  $\alpha$ 5 could limit provisional matrix deposition and subsequent signaling through  $\alpha$ v $\beta$ 3. Consistent with this hypothesis,  $\alpha$ 5/ $\alpha$ 2 chimeric mice show diminished fibronectin deposition in vivo [52]. In addition, the  $\alpha$ 5/ $\alpha$ 2 chimeric integrin enhances flow-induced PKA signaling in endothelial cells, which can inhibit  $\alpha$ v $\beta$ 3 activation [52].

Like mechanical forces, oxLDL also regulates endothelial integrin signaling and shows matrix-specific effects on endothelial cell function. Fibronectin deposition enhances oxLDL-induced NF- $\kappa$ B activation and subsequent ICAM-1 and VCAM-1 expression [52, 53]. This matrix-specific response occurs due to oxLDL's ability to induce  $\alpha$ 5 $\beta$ 1 activation and  $\alpha$ 5 $\beta$ 1-dependent signaling. Unlike flow,  $\alpha$ 5 $\beta$ 1 blocking antibodies and siRNA significantly blunt the inflammatory response to oxLDL [53], whereas  $\alpha$ v $\beta$ 3 inhibitors do not. Atherosclerosis-prone ApoE<sup>-/-</sup> mice fed a high fat, Western diet show reduced proinflammatory gene expression, monocyte recruitment, and plaque formation when treated with the  $\alpha$ 5 $\beta$ 1 inhibitor ATN-161 [53]. Similarly, Sun et al. demonstrated reduced inflammation and early plaque formation in Western diet-fed LDLR<sup>-/-</sup> mice with reduced  $\alpha$ 5 expression ( $\alpha$ 5<sup>-/+</sup>) or treated with ATN-161 [51], demonstrating the contribution of  $\alpha$ 5 to plaque development. While shear stress-induced NF- $\kappa$ B activation involves PAK signaling [48], oxLDL-induced  $\alpha$ 5 $\beta$ 1 signaling activates a FAK/ERK/p90 ribosomal S6-kinase (p90Rsk) pathway to induce NF- $\kappa$ B [54]. Consistent with this, FAK activation is enhanced in the endothelium overlying both mouse and human atherosclerotic plaques; mice expressing kinase-dead FAK in the endothelial cell layer show significantly reduced inflammation and early atherogenesis in response to high fat diet feeding [54].

### Integrins and endothelial dysfunction

Like endothelial activation, atherosclerotic plaque formation has long been associated with an impairment in endothelial nitric oxide (NO) production and vasodilation, termed endothelial dysfunction [55, 56]. Endothelial nitric oxide synthase (eNOS), an enzyme that converts the amino acid L-arginine to NO, is the primary source of endothelial NO production and a key contributor to vasodilation. During endothelial dysfunction, reduced endothelial NO production results from decreased eNOS activity and/or expression, increased eNOS uncoupling, and enhanced NO scavenging by reactive oxygen species [55, 56]. While NO's vasodilatory properties do not likely contribute to its relationship to atherosclerosis, NO also inhibits NF- $\kappa$ B activation and prevents platelet and leukocyte integrin activation [55]. Shear stress promotes eNOS activation through induction of intracellular calcium and through eNOS

phosphorylation [57]. While integrin signaling does not appear to regulate the initial calcium influx, integrin signaling may regulate the kinases involved in flow-induced eNOS phosphorylation, including Akt and PKA [57–59]. Yang et al. demonstrated that  $\beta$ 1-blocking antibodies reduce Akt and eNOS activation early following onset of flow in bovine endothelial cells [60]. However, flow-induced Akt activation does not change based on matrix composition, and inhibiting either  $\alpha$ 5 $\beta$ 1 or  $\alpha$ v $\beta$ 3 signaling does not affect flow-induced Akt activation or eNOS phosphorylation on the site classically phosphorylated by Akt (Ser1179) [34, 61]. In contrast, Yurdagul et al. showed enhanced flow-induced nitric oxide production in endothelial cells on basement membrane proteins compared to fibronectin, identifying enhanced PKA signaling as a primary mediator of this effect [62, 63]. While these studies found that flow-induced Ser1179 phosphorylation requires PKA, phosphorylation of another site known to contribute to eNOS activation, Ser635, does not require PKA activity and paradoxically shows enhanced flow-induced phosphorylation in the presence of PKA inhibitors [62]. Interestingly, PKA inhibition enhances  $\alpha$ v $\beta$ 3 activation in endothelial cells on collagen [61], and inhibiting  $\alpha$ v $\beta$ 3 reduces flow-induced eNOS Ser635 phosphorylation [34].

### Integrins and plaque angiogenesis

Angiogenesis, the formation of new blood vessel from pre-existing vessels, plays a dual role in atherosclerosis, both contributing to plaque progression and alleviating hypoxic injury to ischemic tissue affected by a stenotic plaque [64, 65]. Expansion of the vasa vasorum correlates with plaque progression in mouse models of atherosclerosis [66, 67], and intraplaque angiogenesis correlates with lipid deposition, inflammation, and hemorrhage [68–71]. Like peripheral tissue, hypoxia in the developing atherosclerotic plaque is thought to induce the expression of several proangiogenic growth factors, such as vascular endothelial growth factor and fibroblast growth factor, through the transcription factor hypoxia-inducible factor-1 [72, 73]. Additionally, oxLDL stimulates angiogenic growth factor production in plaque macrophages, consistent with the role of macrophages in regulating angiogenesis in other systems [74, 75]. Expansion of the vasa vasorum tends to occur in vessels with a media thickness  $>0.5$  mm and is therefore more prominent in the arteries of large animals (i.e., pigs, humans) [64, 76]. However, vasa vasorum expansion also occurs in mouse models of atherosclerosis [77, 78]. In response to vessel injury, the adventitia serves as the primary site for acute inflammation [79]. Decreasing angiogenesis blunts stenotic vascular remodeling in injured vessels [80–82]. However, in mouse models of diet-induced atherosclerosis without vessel injury, only 28% of advanced

atherosclerotic plaques ( $>250$   $\mu$ m thickness) and only 3% of intermediate plaques (100–250  $\mu$ m thick) show angiogenic vessels in the intima [77].

Integrins, particularly the provisional matrix-binding integrins, play well-characterized roles in mediating endothelial proliferation and migration during angiogenic vascular remodeling in a variety of systems [14, 83]. However, the role of specific integrins and the processes regulating angiogenesis in the atherosclerotic plaque remain poorly characterized. Endostatin, a cleavage product of collagen XVIII, limits angiogenesis through inhibitory interactions with the endothelial integrins  $\alpha$ 5 $\beta$ 1 and  $\alpha$ v $\beta$ 3 [84]. Endostatin treatment limited both plaque angiogenesis and neointimal area in hypercholesterolemic mice [77], and the endostatin-derivative Endostar reduces vasa vasorum density in hypercholesterolemic mini pigs associated with reduced intimal-medial thickness [85]. However, it is not clear from these studies that the reduction in angiogenesis caused the reduction in plaque area, as endostatin may affect other integrin-dependent functions. Both  $\alpha$ 5 and  $\alpha$ v $\beta$ 3 show enhanced expression in angiogenic vessels [86, 87], and this upregulation has been targeted by several PET tracers linked to RGD peptides used to visualize angiogenesis in vivo [88]. While  $\alpha$ v $\beta$ 3 inhibitors significantly blunt angiogenesis in multiple models [14, 83],  $\alpha$ v- and  $\beta$ 3-deficient mice do not show significant reductions in vasculogenesis or angiogenesis [89–91]. Similarly, endothelial  $\alpha$ 5 deletion or deletion of both  $\alpha$ 5 and  $\alpha$ v does not impair vasculogenesis or angiogenesis in mice [92, 93]. Therefore, inhibiting endothelial  $\alpha$ 5 and  $\alpha$ v integrin signaling may limit endothelial activation without significantly affecting physiological angiogenesis in the ischemic tissue.

### Monocyte/macrophage integrins in plaque formation

Leukocytes express a distinct subset of integrins that mediate interactions with cell adhesion molecules on the endothelial cell surface. These include the  $\beta$ 2 integrin subunit (CD18) and its four  $\alpha$  subunits binding partners ( $\alpha$ L (CD11a, LFA-1),  $\alpha$ M (CD11b, MAC-1),  $\alpha$ X (CD11c), and  $\alpha$ D (CD11d)) and the  $\beta$ 7 integrin subunit and its binding partner  $\alpha$ E (CD103) (Fig. 2) [12]. In addition to these five integrin dimers, the  $\alpha$ 4 subunit (VLA-4) interacts with  $\beta$ 7 only in leukocytes, whereas the  $\alpha$ 4 $\beta$ 1 integrin dimer is found on both leukocyte and nonleukocyte cell populations [12]. While the  $\beta$ 7 integrin heterodimers are primarily associated with lymphocyte targeting to intestinal tissue [94], multiple studies suggest a role for  $\alpha$ 4 $\beta$ 1 and the various  $\beta$ 2 integrins in atherosclerotic plaque formation. These integrins play vital roles in leukocyte targeting to the atherosclerotic plaque, and may also regulate leukocyte function

following transendothelial migration into the plaque microenvironment. However, leukocytes also express several integrins involved in classic cell–matrix interactions that may play more dominant roles in cell motility and function in the tissue microenvironment. While several cell types, including dendritic cells, T cells, and B cells, uniquely and significantly contribute to plaque progression [95], monocyte/macrophages play a dominant role in disease progression and much of the data regarding integrins in atherosclerosis involves monocyte/macrophage biology. Therefore, integrin regulation of monocyte/macrophage function will serve as the focus of this section.

### Integrins in monocyte homing to the plaque

The inflammatory cascade contributes to immune surveillance of the vasculature and mediates leukocyte targeting to the atherosclerotic plaque [15]. Initial attachment of circulating leukocytes to the activated endothelium is mediated by selectins expressed on the endothelial cell surface. The weak bonds formed between endothelial selectins and the leukocyte counter-receptor P-selectin glycoprotein ligand-1 (PSGL-1) easily break in response to shear forces resulting in leukocyte rolling, which sufficiently slows leukocyte velocity to facilitate more stable interactions with the endothelium [15]. Both P-selectin and E-selectin show enhanced expression during early atherogenesis [96, 97], and deletion of either P-selectin or E-selectin reduces plaque formation in mouse models, although the effect of P-selectin deletion is considerably more prominent [98, 99]. Partial activation of leukocyte integrins resulting in an intermediate affinity state, such as in response to E-selectin ligation, allows these integrins to facilitate rolling and primes the integrins for full activation in response to arrest chemokines [100, 101]. The transition from rolling to firm cell adhesion requires integrin transition to a high affinity

state, typically in response to arrest chemokines on the endothelial cell surface [102]. Multiple arrest chemokines play important roles in atherosclerosis, including monocyte chemoattractant protein-1 (MCP-1, CCL2), fractalkine (CX3CL1), and regulated on activation, normal T cell expression and secretion (RANTES, CCL5) [103–108]. In addition to selectins and chemokines, cell–cell interactions between Eph receptors and their ephrin ligands, guidance molecules implicated in tissue patterning during development, also regulate leukocyte integrin activation [109]. Interactions between EphA2/ephrinA1, EphA4/ephrinA1, and EphA4/ephrinB2 have all been shown to stimulate monocyte adhesion [110–113], and expression levels of EphA2, ephrinA1, and ephrinB2 are enhanced in endothelial cells overlying atherosclerotic plaques [110, 114, 115]. Once arrested, integrins also play a major role in facilitating leukocyte migration along the endothelial surface and subsequent transendothelial migration into the neointimal matrix [15].

While difficulty visualizing leukocyte homing to atherosclerotic plaques *in vivo* confounds the study of specific integrins in this response, several groups have utilized genetic knockout models and blocking antibodies to assess the role of specific integrins in leukocyte accumulation within the plaque. Leukocyte integrins show redundancy in multiple integrin–ligand interactions, but specific leukocyte integrins have been shown to play prominent roles in plaque formation (Table 2). Mice deficient in either ICAM-1 or VCAM-1 show reduced early plaque formation [45, 116, 117]; however, only VCAM-1 deficiency limits atherosclerosis in the context of prolonged hypercholesterolemia [45]. The integrins  $\alpha$ L $\beta$ 2,  $\alpha$ M $\beta$ 2, and  $\alpha$ X $\beta$ 2 interact with ICAM-1/2 on the endothelial cell surface, whereas  $\alpha$ 4 $\beta$ 1 serves as the primary leukocyte VCAM-1 receptor [118]. However,  $\alpha$ X $\beta$ 2 has been shown to bind VCAM-1 cooperatively with  $\alpha$ 4 $\beta$ 1 to promote leukocyte adhesion [119]. Consistent

**Table 2** Integrins in leukocyte homing to the plaque

Ligands for homing	Integrins (Alt. names)	Known functions in atherosclerosis	Refs.
ICAM-(1–5)	$\alpha$ L $\beta$ 2	Enhanced expression in response to hypercholesterolemia	[248]
ESM-1	CD11a/CD18	Blocking antibodies limit early monocyte recruitment in early atherosclerosis	[117, 125]
JAM-1	LFA-1		
ICAM-(1–4)	$\alpha$ M $\beta$ 2	No effect on plaque formation	[127]
	CD11b/CD18		
	MAC-1		
ICAM-1	$\alpha$ X $\beta$ 2	Enhanced expression in response to hypercholesterolemia	[128, 132]
VCAM-1	CD11c/ CD18	Deletion limits monocyte recruitment in atherosclerosis	[128]
ICAM-3, VCAM-1	$\alpha$ D $\beta$ 2	No function described	
	CD11d/ CD18		
VCAM-1	$\alpha$ 4 $\beta$ 1	Blocking antibodies reduce monocyte recruitment to atherosclerotic plaques	[120, 121]
Fibronectin CS-1 domain	CD49d/ CD28		
JAM-2	VLA-4		

with a prominent role for VCAM-1 in plaque formation,  $\alpha 4\beta 1$  blocking antibodies significantly reduce myeloid cell recruitment and neointimal growth in atherosclerosis-prone ApoE knockout mice [120, 121]. However,  $\alpha 4$  deletion results in embryonic lethality [122], and these results have yet to be repeated with hematopoietic-specific  $\alpha 4$  deletion. In addition to VCAM-1,  $\alpha 4\beta 1$  can interact with extracellular matrix ligands, such as osteopontin and the connecting segment-1 (CS1) domain of fibronectin [123]. While several groups suggest that CS1-positive fibronectin is present on the luminal atherosclerotic endothelium, blocking VCAM-1 prevents nearly 80% of monocyte adhesion to atherosclerotic endothelium, whereas blocking CS-1 only reduces monocyte adhesion by ~20% [120]. Deletion of  $\beta 2$  integrins similarly reduces early plaque formation [116, 124], suggesting that some  $\beta 2$  integrins also contribute to monocyte targeting to the plaque. Hypercholesterolemia enhances  $\alpha L$  expression in human patients, and blocking antibodies to  $\alpha L\beta 2$  significantly reduce early macrophage recruitment in hypercholesterolemic rats, consistent with a role for ICAM-1 in early plaque formation [117, 125, 126]. While hematopoietic deletion of  $\alpha M$  does not affect macrophage accumulation or plaque formation [127],  $\alpha X$  integrin-deficient mice showed significantly reduced monocyte/macrophage accumulation in atherosclerotic plaques and decreased plaque formation [128]. The integrin  $\alpha X\beta 2$ , expressed on myeloid cells and NK cells, binds a wide variety of ligands, including ICAM-1, VCAM-1, complement proteins, and fibrinogen [119, 129–131]. Hypercholesterolemic mice show enhanced levels of  $\alpha X$  (CD11c)-positive monocytes [128, 132], and human peripheral blood monocytes show elevated  $\alpha X$  expression following a high fat meal [133]. Interestingly, hypercholesterolemia results in the appearance of foamy monocytes in the circulation, and these monocytes show the greatest  $\alpha X$  upregulation [132]. Signaling through  $\alpha X\beta 2$  in these cells promotes  $\alpha 4\beta 1$  activation, suggesting functional cooperativity between  $\beta 1$  and  $\beta 2$  integrins in leukocytes [132].

Several signaling pathways have been implicated in inside-out activation of leukocyte integrins, but the roles these pathways play in the context of atherosclerosis is not well defined [28]. The classic mechanism of integrin activation involves the activation of talin1, inducing the interaction of the FERM domain in the talin1 head region to interact with an NPxY motif in the integrin  $\beta$  subunit tail [28]. Rap1 and its effector protein RIAM interact with talin1 to stimulate its transition to an active conformation [134]. Chemokine-induced G protein-coupled receptor (GPCR) activation typically stimulate Rap1 through a phospholipase C $\gamma$  pathway activating the Rap1 guanine nucleotide exchange factor CalDAG-GEFI [134]. Deletion of CalDAG-GEFI from bone marrow-derived cells significantly blunts atherosclerotic plaque formation in LDLR

KO mice [135], underscoring the importance of this pathway to leukocyte integrin activation. In addition to talin1, binding between the kindlin family of proteins, particularly the hematopoietic isoform kindlin-3, and the  $\beta$  tail has also been shown to regulate integrin affinity [28]. Mutations in kindlin-3 result in severe defects in integrin activation resulting in leukocyte adhesion deficiency [136, 137]. These pathways may have integrin-specific effects as well, with talin1 and kindlin-3 both required for stable adhesion to ICAM-1 but only kindlin-3 required for stable adhesion to VCAM-1 [138].

### Integrins in macrophage migration

Leukocyte migration within the plaque likely affects multiple aspects of plaque biology, including fibrous cap stability, adaptive immunity, and plaque regression. To facilitate cell migration, macrophages express several extracellular matrix-binding integrins, including the collagen receptor  $\alpha 1\beta 1$ , the laminin receptors  $\alpha 3\beta 1$  and  $\alpha 6\beta 1$ , and the provisional matrix-binding integrins  $\alpha 4\beta 1$ ,  $\alpha 5\beta 1$ ,  $\alpha 9\beta 1$ ,  $\alpha \nu\beta 3$ , and  $\alpha \nu\beta 5$  [139–143]. Ligation of  $\alpha 1\beta 1$  on collagen limits macrophage egression from inflamed tissue [139], and  $\alpha 1$ -deficient mice show reduced plaque macrophage and T cell content [144]. Osteopontin, known to be expressed in atherosclerotic plaques, interacts with the monocyte integrins  $\alpha 4\beta 1$ ,  $\alpha 9\beta 1$ , and  $\alpha \nu\beta 3$ , and promotes monocyte migration and survival [145]. However, the role of the provisional matrix-binding integrins in macrophage migration has not been examined in the context of atherosclerosis. In addition to classic matrix-binding integrins, several integrins implicated in leukocyte homing also show affinity for extracellular matrix proteins. Of particular interest, the promiscuous integrin  $\alpha D\beta 2$  binds to the provisional matrix proteins fibronectin and vitronectin and shows prominent upregulation during macrophage foam cell formation [146]. High levels of  $\alpha D\beta 2$  expression hinders macrophage migration, suggesting that upregulation of  $\alpha D\beta 2$  may serve as a migratory stop signal to limit macrophage egression from atherosclerotic plaques [147].

### Integrin signaling in macrophage function

Ligation of specific macrophage integrins may affect various aspects of macrophage function in atherosclerosis, including the ability of macrophages to clear local lipid deposits, to phagocytose apoptotic cell debris, and to facilitate local proinflammatory gene expression (Table 3). Fibronectin in the atherosclerotic plaque can bind  $\alpha M\beta 2$  and  $\alpha \nu\beta 3$  in plaque macrophages [140, 148], and both  $\alpha M\beta 2$  and  $\alpha \nu\beta 3$  signaling reduces macrophage scavenger receptor expression (CD36, SRA) and foam cell formation [140, 149]. Similarly,  $\alpha M\beta 2$  signaling can



**Table 3** Integrins in plaque macrophage function

Phenotype	Integrins	Ligand	Known functions in atherosclerosis models	Refs.
Lipid uptake	$\alpha$ M $\beta$ 2	Fibronectin	Decreased scavenger receptor expression and foam cell formation; Expression reduced in atherosclerosis	[149, 150]
	$\alpha$ 4 $\beta$ 7	VCAM-1 MadCAM-1	Deletion reduces native and acetylated LDL uptake	[151]
	$\alpha$ v $\beta$ 3	Fibronectin Osteopontin Tenascin-C	Decreased scavenger receptor expression and foam cell formation	[140]
Inflammation	$\alpha$ v $\beta$ 3	Fibronectin	Increased NF- $\kappa$ B-dependent cytokine (TNF $\alpha$ , IL-1 $\beta$ , IL-8) production	[152]
		Osteopontin Tenascin-C	Deletion enhances TNF $\alpha$ production	[153]
Efferocytosis	$\alpha$ v $\beta$ 3 $\alpha$ v $\beta$ 5	Thrombospondin-1, MFG-E8	Mediate efferocytosis in other systems; Role in plaque efferocytosis unknown	[156, 157]

reduce macrophage lipid uptake, although  $\alpha$ M $\beta$ 2 expression is downregulated in plaque macrophages [150]. Furthermore, peritoneal macrophages from  $\beta$ 2 knockout mice show enhanced native and acetylated LDL uptake as well as apoptotic thymocytes [124], suggesting integrin dimers may attenuate macrophage lipid accumulation and cellular debris. Atherosclerotic plaques show enhanced expression of the integrin  $\alpha$ 4 $\beta$ 7, classically involved in homing to gut-associated lymphoid tissue, and macrophages from  $\beta$ 7 knockout mice show reduced native and acetylated LDL uptake [151]. Macrophage  $\alpha$ v $\beta$ 3 signaling has been shown to drive sustained NF- $\kappa$ B signaling and proinflammatory cytokine (TNF- $\alpha$ , IL-1 $\beta$ , IL-8) production and to augment the macrophage proinflammatory response to TNF $\alpha$  and LPS [152]. While deletion of  $\beta$ 3 integrins in myeloid cells paradoxically enhances TNF $\alpha$  production and atherosclerotic plaque formation in vivo [153], myeloid-specific deletion of the  $\beta$ 3-binding partner  $\alpha$ v results in severe ulcerative colitis that may exacerbate atherosclerosis in the  $\beta$ 3 knockout mice [154]. In addition to lipid uptake and proinflammatory cytokine production, plaque macrophages also critically clear apoptotic cell debris in the atherosclerotic plaque through the process of efferocytosis [155]. Several receptors are implicated in the engulfment of apoptotic cells, including the vitronectin-binding integrins  $\alpha$ v $\beta$ 3 and  $\alpha$ v $\beta$ 5 [156]. These integrins recognize the matricellular extracellular matrix protein thrombospondin and the phosphatidylserine-binding protein MFG-E8 on the surface of dying cells to facilitate phagocytosis [156, 157]. Macrophage efferocytosis becomes deficient in the atherosclerotic plaque, and treatment with damage-associated molecular pathogen HMGB1, known to accumulate in atherosclerosis, prevents efferocytosis through  $\alpha$ v $\beta$ 3 inhibition [155, 158, 159]. However, the role of these integrins in efferocytosis in the context of atherosclerosis has not been explored.

### Integrins in smooth muscle migration and proliferation

Vascular smooth muscle cells, known for their contractile function in blood flow regulation and vessel tonicity [160], play a critical role in atherosclerotic progression through their remarkable ability to transdifferentiate to a proliferative and migratory phenotype. Under quiescent conditions in the media, smooth muscle cells express contractile markers (smooth muscle actin (SMA), calponin, SM22- $\alpha$ ) with minimal proliferation and migration. However, upon stimulation with various factors such as cytokines, growth factors, oxidized lipids, and extracellular matrix proteins [1–3, 161], vascular smooth muscle cells downregulate their contractile markers and become increasingly fibroproliferative and migratory. Moreover, vascular smooth muscle exhibits the capacity to undergo an inflammatory, macrophage-like phenotypic switch, characterized by enhanced inflammatory gene expression (VCAM-1, ICAM-1) and phagocytic properties [162, 163]. The multifarious contribution by smooth muscle during atherogenesis is evident, as early and intermediate plaques accumulate endoplasmic reticulum and lipid droplet-rich vascular smooth muscle cells, while smooth muscle-derived fibrous tissue and fibrous cap formation is observed in advanced lesions [6]. Furthermore, recent lineage-tracing studies show up to 80% of all cells in atherosclerotic lesions are derived from smooth muscle cell origin [164], suggesting a previously underestimated vascular smooth muscle contribution during atherogenesis.

### Integrin signaling in smooth muscle phenotypic modulation

With the known roles of integrins in matrix remodeling, proliferation, and cell migration, the role of integrin signaling in smooth muscle biology in atherosclerosis has

garnered considerable attention. Quiescent medial vascular smooth muscle is surrounded by a thin basement membrane rich in collagen IV and laminin [165], and basement membrane proteins tend to promote a quiescent smooth muscle phenotype (Table 4). Smooth muscle cells express the collagen-binding integrins  $\alpha 1\beta 1$  and  $\alpha 2\beta 1$  [166]; however,  $\alpha 1\beta 1$  binds more strongly to collagen IV and  $\alpha 2\beta 1$  shows a higher affinity for collagen I [167]. Consistent with a role for basement membrane proteins in limiting endothelial activation,  $\alpha 1\beta 1$  shows reduced expression during smooth muscle phenotypic modulation [168], and  $\alpha 1$  knockout mice show enhanced smooth muscle incorporation into atherosclerotic plaques [144]. Like  $\alpha 1\beta 1$ , the laminin-binding integrins  $\alpha 6\beta 1$  and  $\alpha 7\beta 1$  show enhanced expression in quiescent smooth muscle cells [169, 170], and ligation of  $\alpha 7\beta 1$ , such as through interactions with cartilage oligomeric matrix protein, maintains vascular smooth muscle quiescence [171] and reduces smooth muscle proliferation [172].

During neointimal recruitment, smooth muscle cells are exposed to a variety of provisional matrix proteins such as fibronectin, vitronectin, osteopontin, and tenascin-C [10]. Similarly, several provisional matrix-binding integrins, such as  $\alpha 5\beta 1$  and  $\alpha \nu\beta 3$ , show enhanced expression in neointimal smooth muscle [173]. While other integrins likely play important functions, current

literature strongly supports a role for signaling through  $\alpha \nu\beta 3$  in smooth muscle proliferation and migration. Deletion of plasma fibronectin significantly reduces smooth muscle content in atherosclerotic lesions [37], suggesting fibronectin-binding integrins may contribute to smooth muscle migration and proliferation during neointimal recruitment. Fibronectin binds both  $\alpha 5\beta 1$  and  $\alpha \nu\beta 3$ , and while both  $\alpha 5\beta 1$  inhibitors (ATN-161) and  $\alpha \nu\beta 3$  inhibitors (S247) reduce atherosclerotic plaque formation, only  $\alpha \nu\beta 3$  inhibition reduced the incidence of fibrous cap formation [34, 53]. While  $\alpha \nu\beta 3$  expression can be observed in the medial layer [174, 175], smooth muscle cells upregulate  $\alpha \nu\beta 3$  in response to arterial injury in vivo and thrombin, transforming growth factor  $\beta$  (TGF $\beta$ ), and platelet-derived growth factor-BB (PDGF-BB) in vitro [175–177]. Smooth muscle proliferation in response to osteopontin and tenascin-C in culture can be blunted by inhibiting  $\alpha \nu\beta 3$  but not  $\beta 1$  integrins [178–180], and inhibitors of  $\alpha \nu\beta 3$  prevent restenosis following vascular injury [181, 182]. While  $\beta 3$  knockout mice show enhanced atherosclerosis [183], this response is thought to occur due to the enhanced production of TNF $\alpha$  in myeloid cells in these mice, and  $\beta 3$  knockout mice show reduced neointimal formation following femoral artery injury [184], consistent with  $\alpha \nu\beta 3$ -dependent smooth muscle recruitment and proliferation.

**Table 4** Integrin regulation of smooth muscle phenotype

Phenotype	Integrins	Ligand(s)	Known functions in atherosclerosis models	Refs.
Contractile smooth muscle phenotype	$\alpha 1\beta 1$	Collagen IV	Decreased expression during phenotypic modulation	[168, 249]
			Deletion increases plaque smooth muscle content	[144]
			Enhances smooth muscle proliferation to AngII	[195, 200]
	$\alpha 7\beta 1$	Laminin, COMP	Decreased expression during phenotypic modulation	[170]
			Enhances contractile gene expression	[171]
			Reduces smooth muscle proliferation	[172]
$\alpha 8\beta 1$	Fibronectin Vitronectin Osteopontin Tenascin-C	Decreased expression during phenotypic modulation	[208, 209]	
		Enhances contractile gene expression	[208, 209]	
		Decreases smooth muscle migration	[210, 211]	
		Deletion enhances neointimal smooth muscle content during atherosclerosis and restenosis	[212]	
Synthetic smooth muscle phenotype	$\alpha 2\beta 1$	Collagen I, Collagen VIII	Enhanced expression during phenotypic modulation	[249]
			Enhances smooth muscle proliferation	[215, 216]
			Mediates collagen deposition	[202]
	$\alpha 5\beta 1$	Fibronectin	Enhanced expression during phenotypic modulation	[173]
			Mediates fibronectin deposition	[202, 218]
			Inhibitors do not affect neointimal smooth muscle content in atherosclerosis	[53]
	$\alpha \nu\beta 3$	Fibronectin Vitronectin Osteopontin Tenascin-C	Enhanced expression during phenotypic modulation	[173]
			Enhances smooth muscle proliferation	[178–180]
			Reduces smooth muscle apoptosis	[221]
			Inhibitors do not affect neointimal smooth muscle content in atherosclerosis	[34, 181, 182]
			Deletion reduces smooth muscle recruitment in restenosis	[184]

Integrin signaling promotes smooth muscle cell proliferation and migration through multiple mechanisms. Ligation of  $\alpha\beta3$  and  $\alpha\beta5$  integrins mediates FAK activity [185] and drives vascular smooth muscle migration through Akt and paxillin phosphorylation [186–188]. Conversely, the endogenous FAK inhibitor FAK-related nonkinase (FRNK) is highly expressed in vascular smooth muscle cells and reduces smooth muscle migration [189]. In addition to direct effects by integrin-linked signaling pathways, integrins crosstalk with growth factor signaling affects smooth muscle proliferation. Tenascin-C promotes  $\alpha\beta3$  interactions with PDGF receptor to further enhance proliferation [179, 180]. Following vascular injury in models of hyperglycemia, enhanced  $\alpha\beta3$  signaling upregulates Insulin Growth Factor-1 (IGF-1) [190]. In addition, IGF-1 reciprocally promotes vascular smooth muscle proliferation on  $\alpha\beta3$ -binding matrix proteins, but not on laminin or collagen IV, although specific integrins involved were not identified [191].

Angiotensin II (AngII), a well-characterized vasoconstrictor in the renin–angiotensin system, contributes to smooth muscle proliferation through increased integrin activation and enhanced application of mechanical forces to integrin adhesions [192, 193]. AngII induces smooth muscle adhesion to collagen and fibronectin through the AT1 receptor [192–194], resulting in FAK-dependent ERK activation and enhanced cell proliferation [195, 196]. Cytoskeletal stiffening and contraction of smooth muscle cells treated with AngII results in elevated blood pressure [192, 193, 197], thereby enhancing mechanical load on the smooth muscle integrins. However, integrin signaling may also contribute to vasoconstriction, as treatment with the integrin inhibitor RGDS reduced vasoconstriction to AngII but not other vasoconstrictors [198]. While  $\alpha1\beta1$  has largely been implicated in maintaining the contractile phenotype in atherosclerosis, smooth muscle hypertrophy to chronic AngII stimulation is reduced in  $\alpha1$  knockout mice [199], and inhibiting  $\alpha1\beta1$  using siRNA knockdown or peptide inhibitors blunts AngII-induced ERK activation and proliferation [195, 200]. Consistent with this association, AngII promotes  $\alpha1$  integrin expression [199] along with the expression of multiple provisional matrix-binding integrins, such as  $\alpha8$ ,  $\beta1$ , and  $\beta3$  [201, 202].

Not all integrin–matrix interactions conform to the concept that collagen/laminin-binding integrins suppress smooth muscle phenotypic modulation and provisional matrix-binding integrins promote phenotypic modulation. The provisional matrix-binding integrin  $\alpha8\beta1$  is associated with smooth muscle quiescence, as smooth muscle phenotypic modulation reduces  $\alpha8$  expression, while overexpression of  $\alpha8$  promotes the contractile phenotype [208, 209]. In contrast to these findings, Zargham et al.

demonstrated enhanced  $\alpha8$  expression in the neointima and showed that  $\alpha8$  overexpression promotes smooth muscle migration, whereas deletion reduces migration [210, 211]. However,  $\alpha8$  knockout mice show enhanced injury-induced restenosis and diet-induced atherosclerotic plaque formation [212], consistent with a role for  $\alpha8\beta1$  signaling in maintaining smooth muscle quiescence. In contrast, upregulation of collagen VIII in the atherosclerotic plaque promotes smooth muscle proliferation and migration into the neointima presumably through  $\alpha2\beta1$ , since  $\alpha2\beta1$  blockade reduces smooth muscle adhesion to collagen VIII by over 70% [213, 214]. Signaling through  $\alpha2\beta1$  in vascular smooth muscle cells promotes smooth muscle growth through upregulating PDGF-BB expression and transphosphorylation of the PDGF receptor [215, 216]. Collagen VIII knockout mice show significantly reduced fibrous cap thickness in atherosclerotic plaques [217], consistent with a role for collagen VIII and  $\alpha2\beta1$  in fibrous cap formation.

### Integrin signaling in extracellular matrix remodeling

Vascular smooth muscle cells drive the development of the fibrous cap, largely composed of smooth muscle and collagen, to stabilize the plaque and prevent plaque rupture [6]. Therefore, alterations in the balance between matrix deposition and proteolysis and perturbations in the microenvironment that regulate smooth muscle apoptosis critically determine the stability of the fibrous cap. Smooth muscle collagen deposition requires both  $\alpha2\beta1$  integrins and the deposition of fibronectin [202]. Fibronectin fibrillogenesis, classically mediated by  $\alpha5\beta1$ , can be blunted by inhibiting  $\alpha5\beta1$  in smooth muscle cells in culture, and  $\alpha5\beta1$  shows enhanced expression in neointimal smooth muscle cells [218, 219]. Loading smooth muscle cells with lipid, as observed in atherosclerotic plaques, significantly diminishes fibronectin and collagen deposition, associated with perturbations in  $\alpha5\beta1$ -dependent fibrillar adhesion formation [220]. This suggests that lipid accumulation within the plaque or defective macrophage lipid clearance may reduce fibrous cap stability through effects on the smooth muscle integrins. Interestingly,  $\alpha\beta3$  integrin signaling prevents smooth muscle apoptosis in response to oxidized LDL [221], and  $\alpha\beta3$  integrins are largely absent from sites of plaque rupture [222]. While  $\alpha\beta3$  can also contribute to fibronectin deposition, the contribution of  $\alpha5\beta1$  and  $\alpha\beta3$  to neointimal matrix deposition has not been shown in vivo, likely due to difficulties in separating the roles of these integrins in smooth muscle recruitment and subsequent matrix deposition.

**Table 5** Platelet integrins in thrombotic complications

Ligand	Integrins	Known functions	Refs.
Fibrinogen	$\alpha$ IIB $\beta$ 3	Atherothrombosis	[244]
		Adhesion cross-bridges with endothelial cells and leukocytes	[225, 229]
		Protease release	[233, 234]
Collagen	$\alpha$ 2 $\beta$ 1	Stable interaction with collagen	[239]
Fibronectin	$\alpha$ 5 $\beta$ 1	CD40L-induced platelet activation	[238]

## Platelet integrins in thrombotic complications

Platelets express a number of integrins, namely  $\alpha$ IIB $\beta$ 3 (the fibrinogen receptor),  $\alpha$ v $\beta$ 3, as well as three  $\beta$ 1 integrins at lower expression levels ( $\alpha$ 2 $\beta$ 1,  $\alpha$ 5 $\beta$ 1,  $\alpha$ 6 $\beta$ 1) (Table 5). A number of proteins present in the plasma or released from activated platelets bind platelet integrins and act as bridging proteins to receptors on other cells. These bridging proteins include fibrin and fibrinogen, fibronectin, von Willebrand Factor (vWF), vitronectin, and other ligands that contain the RGD integrin-binding domain. Platelet  $\alpha$ IIB $\beta$ 3 binds many of these, and its role, in particular, in the thrombotic complications of atherosclerosis is well documented. In more recent years, the importance of the cross-talk between platelets, leukocytes, and vascular endothelium during inflammatory processes of atherogenesis has become more appreciated. Furthermore, there is evidence for a contribution of platelet integrins in these responses.

### Platelet integrin activation

During early atherogenesis, endothelial activation results in platelet activation and recruitment of platelets to the vessel wall. This early recruitment establishes a positive feedback loop in which the platelets release substances that cause further endothelial activation. Inhibiting early platelet adhesion decreased atherosclerotic plaque formation and is therefore thought to be a key step in the initiation of atherogenesis [223, 224]. While a number of receptor–ligand pairs are important, platelet integrins play a key role in firm adhesion. After rolling along the endothelium, platelets become activated leading to inside-out signaling which causes a conformational change in  $\alpha$ IIB $\beta$ 3. This activated form of  $\alpha$ IIB $\beta$ 3 facilitates the firm adhesion of platelets to the endothelium through a fibrinogen cross-bridge with endothelial  $\alpha$ v $\beta$ 3 [225]. Activated platelets facilitate recruitment of leukocytes to regions of injury or inflammation. Platelets bind circulating leukocytes to form platelet–leukocyte aggregates in the circulation, which are subsequently recruited to the vessel wall. Initial interactions between platelet P-selectin and leukocyte PSGL-1 lead to

signaling through a Src family tyrosine kinase pathway, which enhances leukocyte  $\beta$ 2 integrin expression [226]. Furthermore, ligation of platelet P-selectin activates  $\alpha$ IIB $\beta$ 3 through inside-out signaling, which stabilizes platelet–leukocyte aggregate formation. These aggregates occur either in circulation or via platelet binding to the endothelial surface, and facilitate leukocyte recruitment through leukocyte  $\beta$ 2 integrin and platelet  $\alpha$ IIB $\beta$ 3 co-interactions with fibrinogen [227–229]. In contrast, adherent neutrophils within venules have been shown to interact with P-selectin- and  $\alpha$ IIB $\beta$ 3-expressing platelets, although a specific role for  $\alpha$ IIB $\beta$ 3 was not identified [230].

### Integrin signaling in platelet function

As a result of outside-in signaling from the integrins, activated platelets release preformed substances from their granules and can make new proteins from pre-packaged mRNA. These can promote further platelet aggregation. In addition, this integrin-dependent degranulation places the platelets in a position to direct the inflammatory process of atherosclerosis by releasing soluble factors such as cytokines (e.g., IL-1b, CD40L) and chemokines (e.g., CXCL4, CCL5). These in turn activate the vascular endothelium leading to enhanced expression of adhesion molecules such as ICAM-1 and VCAM-1 and release of IL-6 and other inflammatory mediators that can promote the recruitment of monocytes to the plaque by processes described above. For example, deposition of CCL5 onto the atherosclerotic endothelium from platelet granules promotes monocyte arrest [231]. What exactly happens to the platelets that are attached to leukocytes as they undergo diapedesis has not been fully elucidated. However, there is evidence that platelets relocate to the rear of a monocyte and transfer to the endothelium as the monocyte begins to transmigrate [232].

The signaling initiated via platelet  $\alpha$ IIB $\beta$ 3 ligation can affect other parts of the plaque formation. For example, the destabilization of the plaque that occurs before rupture is also orchestrated in part by platelets. Activated platelets release MMP-2 and MMP-9 during aggregation [233, 234], and platelet  $\alpha$ IIB $\beta$ 3 signaling stimulates endothelial production and secretion of MMP-9 and urokinase-type plasminogen activator receptor (uPAR) [235], potentially through the generation of CD40L and its subsequent interaction with endothelial CD40 receptors. Ligation of  $\alpha$ IIB $\beta$ 3 promotes CD40L secretion from activated platelets [236], and CD40L has been shown to have an integral role in plaque development, inflammation, and atherothrombosis [237]. More recently, Simic et al. provided evidence in human platelets that  $\alpha$ 5 $\beta$ 1 is also a receptor for soluble CD40L, and that engagement of  $\alpha$ 5 $\beta$ 1 by sCD40L leads to platelet activation [238], suggesting that we have yet to understand

the complete roles of platelet integrins in the atherogenic process.

### Platelet integrins in thrombotic complications

Platelets are key players in thrombotic complications of atherosclerosis, as they immediately respond to exposure of the subendothelial matrix due to disruption of the endothelium in atherothrombosis. Initial contact, or tethering, is mediated by platelet GPIb $\alpha$  interactions with vWF, whereas more stable binding occurs between the platelet integrin  $\alpha$ 2 $\beta$ 1 and collagen [239]. Fibronectin and laminin engage other integrins, namely  $\alpha$ 5 $\beta$ 1,  $\alpha$ 6 $\beta$ 1, respectively [240], and there appears to be considerable redundancy between these receptors, in that deficiency of any one of these does not cause a severe bleeding disorder. These interactions lead to platelet activation and secretion of many factors that can behave in a paracrine or autocrine fashion to promote platelet aggregation. Also central to the thrombotic process is the activation of the coagulation system. Platelets provide a surface upon which coagulation cascade complexes are assembled, leading to thrombin generation. Thrombin then stimulates procoagulant activity on the platelet surface, which promotes the generation of more thrombin [241], and perpetuates the process. In addition, thrombin activates  $\alpha$ IIb $\beta$ 3 [242] in the developing thrombus, which typically binds fibrinogen to form a cross-bridge between platelets and augmented thrombus growth. Initially, this interaction is relatively weak, but as the platelet becomes more activated, the bond strengthens and the thrombus is stabilized. A stable thrombus leads to blockage of the artery, while a fragmented thrombus can form an embolism distal to the site of injury. Alternatively, chronic thrombotic process that occurs in a patient may perpetuate plaque progression through many of the mechanisms discussed above.

In a recent review, Mastenbroek et al. [243] highlighted the fact that much of our knowledge about the thrombotic process comes from studies in the absence of atherosclerotic plaques. This has been difficult to overcome in that many commonly used animal models of atherosclerosis do not spontaneously undergo plaque rupture. However, although somewhat artificial, several animal models of induced plaque rupture have been developed, and  $\alpha$ IIb $\beta$ 3 has been implicated in the atherothrombus formation in two mouse models [244]. This should not be surprising, because this integrin is also integral in platelet activation due to high shear or oscillatory shear, as is found in stenotic arteries [245, 246]. Using in vitro flow chamber models of thrombus formation where blood was flowed over plaque content, a role for the collagen receptor GPVI was shown, but blockade of the integrin collagen receptor,  $\alpha$ 2 $\beta$ 1, failed to alter thrombus formation. Nonetheless, to date, much of the data suggest that mechanisms of thrombus formation

over healthy vs. atherosclerotic vessels are similar. It remains to be seen if the individual roles of integrins translate to human atherothrombosis.

### Future directions

This review has outlined important roles for integrin signaling in endothelial dysfunction and activation, leukocyte homing to the plaque, leukocyte function within the plaque, smooth muscle recruitment and fibroproliferative remodeling, and thrombotic complications. However, there is still much to learn concerning how integrin signaling affects this wide range of pathological processes. While intravital microscopy has allowed considerable insight into the role of specific integrins in platelet aggregation and in leukocyte homing to the post-capillary venule, the pulsatile nature of the large conduit vessels has made visualizing these processes in atherosclerosis-relevant contexts difficult. Improvements in the visualization of leukocyte targeting to atherosclerotic lesions will likely shed further insight into the role of specific integrins in this process. Leukocyte targeting to the endothelium in these high flow vessels may require different mechanisms to facilitate firm adhesion than that previously described in the post-capillary venules, and additional studies will be required to understand how these processes stabilize the leukocyte–endothelial interface. While integrin activation classically regulates leukocyte and platelet function, the role of integrin activation in adherent cell types is less well characterized, and its role in integrin signaling in vivo remains unknown. Furthermore, the signaling mechanisms utilized by specific integrins to modulate cell function based on changing matrix composition remain virtually unknown. Application of advanced proteomics techniques will be critical to characterize the differential signaling responses activated by specific cell–matrix interactions and within relevant cell types that may express a different repertoire of integrin-binding proteins.

Despite abundant and diverse integrin expression among all atherosclerotic plaque-associated cell types, current literature suggests that a few integrins may prove therapeutically beneficial for the treatment of atherosclerosis. The leukocyte integrin  $\alpha$ X $\beta$ 2 may prove to be particularly important in atherogenic inflammation, as this integrin shows upregulation under hypercholesterolemic conditions [128, 132, 133] and reduced atherosclerosis upon its deletion [128]. Deposition of provisional matrix proteins in the atherosclerotic plaque creates a permissive environment for cell proliferation, migration, differentiation, and inflammatory response largely through signaling with  $\alpha$ 5 $\beta$ 1 and  $\alpha$ v $\beta$ 3. As such, therapeutic targets against these heterodimers have the potential to greatly impact the progression

of atherosclerosis. Indeed, work from our lab and others has shown that pharmacological inhibition of both  $\alpha v\beta 3$  and  $\alpha 5\beta 1$  significantly reduces atherosclerosis [34, 53, 77, 182]. However, inhibition of  $\alpha v\beta 3$  integrins significantly reduces smooth muscle incorporation into the plaque [34], similar to what has been observed upon fibronectin deletion [37]. In contrast, inhibition of  $\alpha 5\beta 1$  blunts plaque inflammation without reducing smooth muscle incorporation or fibrous cap thickness [53], suggesting that targeting  $\alpha 5\beta 1$  may be able to separate the proinflammatory properties of the provisional matrix from their role in promoting fibrous cap formation. Future studies with more selective integrin inhibitors or better methods of targeting integrin inhibitors to specific cell types will ultimately be necessary to establish their worth as therapeutic targets for controlling atherogenic vascular remodeling.

**Acknowledgements** This work was supported by the National Institute of Health (R01 HL098435 to A.W.O.), by an American Heart Association Grant-In-Aid (15GRNT25560056 to A.W.O.), an intramural Malcolm Feist Pre-doctoral Fellowship (to A.C.F.), and an American Heart Association Pre-doctoral Fellowship (17PRE33440111 to A.C.F.).

## References

- Kingsley K et al (2002) ERK1/2 mediates PDGF-BB stimulated vascular smooth muscle cell proliferation and migration on laminin-5. *Biochem Biophys Res Commun* 293(3):1000–1006
- Chahine MN et al (2009) Oxidized LDL affects smooth muscle cell growth through MAPK-mediated actions on nuclear protein import. *J Mol Cell Cardiol* 46(3):431–441
- Orr AW et al (2009) Molecular mechanisms of collagen isotype-specific modulation of smooth muscle cell phenotype. *Arterioscler Thromb Vasc Biol* 29(2):225–231
- Autieri MV (2012) Pro- and anti-inflammatory cytokine networks in atherosclerosis. *ISRN Vasc Med* 2012:17
- Owens GK, Kumar MS, Wamhoff BR (2004) Molecular regulation of vascular smooth muscle cell differentiation in development and disease. *Physiol Rev* 84(3):767–801
- Stary HC et al (1995) A definition of advanced types of atherosclerotic lesions and a histological classification of atherosclerosis. A report from the Committee on Vascular Lesions of the Council on Arteriosclerosis, American Heart Association. *Circulation* 92(5):1355–1374
- Virmani R et al (2006) Pathology of the vulnerable plaque. *J Am Coll Cardiol* 47(8 Suppl):C13–C18
- Libby P (2005) The forgotten majority: unfinished business in cardiovascular risk reduction. *J Am Coll Cardiol* 46(7):1225–1228
- Hahn C, Schwartz MA (2009) Mechanotransduction in vascular physiology and atherogenesis. *Nat Rev Mol Cell Biol* 10(1):53–62
- Yurdagul A Jr. et al (2016) The arterial microenvironment: the where and why of atherosclerosis. *Biochem J* 473(10):1281–1295
- Yurdagul A Jr., Orr AW (2016) Blood brothers: hemodynamics and cell-matrix interactions in endothelial function. *Antioxid Redox Signal* 25(7):415–434
- Hynes RO (2002) Integrins: bidirectional, allosteric signaling machines. *Cell* 110(6):673–687
- Ross TD et al (2013) Integrins in mechanotransduction. *Curr Opin Cell Biol* 25(5):613–618
- Stupack DG, Cheresh DA (2002) ECM remodeling regulates angiogenesis: endothelial integrins look for new ligands. *Sci STKE* 2002(119):PE7
- Ley K et al (2007) Getting to the site of inflammation: the leukocyte adhesion cascade updated. *Nat Rev Immunol* 7(9):678–689
- Shattil SJ, Ginsberg MH, Brugge JS (1994) Adhesive signaling in platelets. *Curr Opin Cell Biol* 6(5):695–704
- Schwartz MA (2001) Integrin signaling revisited. *Trends Cell Biol* 11(12):466–470
- Humphries JD et al (2015) Emerging properties of adhesion complexes: what are they and what do they do? *Trends Cell Biol* 25(7):388–397
- Parsons JT, Horwitz AR, Schwartz MA (2010) Cell adhesion: integrating cytoskeletal dynamics and cellular tension. *Nat Rev Mol Cell Biol* 11(9):633–643
- Orr AW et al (2006) Mechanisms of mechanotransduction. *Dev Cell* 10(1):11–20
- Kanchanawong P et al (2010) Nanoscale architecture of integrin-based cell adhesions. *Nature* 468(7323):580–584
- Byron A et al (2012) Proteomic analysis of alpha4beta1 integrin adhesion complexes reveals alpha-subunit-dependent protein recruitment. *Proteomics* 12(13):2107–2114
- Schiller HB et al (2013) beta1- and alphaV-class integrins cooperate to regulate myosin II during rigidity sensing of fibronectin-based microenvironments. *Nat Cell Biol* 15(6):625–636
- Kuo JC et al (2011) Analysis of the myosin-II-responsive focal adhesion proteome reveals a role for beta-Pix in negative regulation of focal adhesion maturation. *Nat Cell Biol* 13(4):383–393
- Robertson J et al (2015) Defining the phospho-adhesome through the phosphoproteomic analysis of integrin signalling. *Nat Commun* 6:6265
- Wickstrom SA et al (2010) The ILK/PINCH/parvin complex: the kinase is dead, long live the pseudokinase!. *EMBO J* 29(2):281–291
- Kim C, Ye F, Ginsberg MH (2011) Regulation of integrin activation. *Annu Rev Cell Dev Biol* 27:321–345
- Ye F, Snider AK, Ginsberg MH (2014) Talin and kindlin: the one-two punch in integrin activation. *Front Med* 8(1):6–16
- Jalali S et al (2001) Integrin-mediated mechanotransduction requires its dynamic interaction with specific extracellular matrix (ECM) ligands. *Proc Natl Acad Sci USA* 98(3):1042–1046
- Tzima E et al (2001) Activation of integrins in endothelial cells by fluid shear stress mediates Rho-dependent cytoskeletal alignment. *EMBO J* 20(17):4639–4647
- Orr AW et al (2005) The subendothelial extracellular matrix modulates NF-kappaB activation by flow: a potential role in atherosclerosis. *J Cell Biol* 169(1):191–202
- Hynes RO (2012) The evolution of metazoan extracellular matrix. *J Cell Biol* 196(6):671–679
- Short SM, Talbott GA, Juliano RL (1998) Integrin-mediated signaling events in human endothelial cells. *Mol Biol Cell* 9(8):1969–1980
- Chen J et al (2015)  $\alpha\beta 3$  integrins mediate flow-induced NF- $\kappa$ B activation, proinflammatory gene expression, and early atherogenic inflammation. *Am J Pathol* 185(9):2575–2589
- Feaver RE et al (2010) Atheroprone hemodynamics regulate fibronectin deposition to create positive feedback that sustains endothelial inflammation. *Circ Res* 106(11):1703–1711

36. Green J et al (2014) Flow patterns regulate hyperglycemia-induced subendothelial matrix remodeling during early atherogenesis. *Atherosclerosis* 232(2):277–284
37. Rohwedder I et al (2012) Plasma fibronectin deficiency impedes atherosclerosis progression and fibrous cap formation. *EMBO Mol Med* 4(7):564–576
38. Murphy PA, Hynes RO (2014) Alternative splicing of endothelial fibronectin is induced by disturbed hemodynamics and protects against hemorrhage of the vessel wall. *Arterioscler Thromb Vasc Biol* 34(9):2042–2050
39. Gelfand BD et al (2011) Hemodynamic activation of beta-catenin and T-cell-specific transcription factor signaling in vascular endothelium regulates fibronectin expression. *Arterioscler Thromb Vasc Biol* 31(7):1625–1633
40. van Keulen JK et al (2007) Levels of extra domain A containing fibronectin in human atherosclerotic plaques are associated with a stable plaque phenotype. *Atherosclerosis* 195(1):e83–e91
41. Pober JS, Sessa WC (2007) Evolving functions of endothelial cells in inflammation. *Nat Rev Immunol* 7(10):803–815
42. Nakashima Y et al (1998) Upregulation of VCAM-1 and ICAM-1 at atherosclerosis-prone sites on the endothelium in the ApoE-deficient mouse. *Arterioscler Thromb Vasc Biol* 18(5):842–851
43. Collins T, Cybulsky MI (2001) NF-kappaB: pivotal mediator or innocent bystander in atherogenesis? *J Clin Invest* 107(3):255–264
44. Hajra L et al (2000) The NF-kappa B signal transduction pathway in aortic endothelial cells is primed for activation in regions predisposed to atherosclerotic lesion formation. *Proc Natl Acad Sci USA* 97(16):9052–9057
45. Cybulsky MI et al (2001) A major role for VCAM-1, but not ICAM-1, in early atherosclerosis. *J Clin Invest* 107(10):1255–1262
46. Tzima E et al (2005) A mechanosensory complex that mediates the endothelial cell response to fluid shear stress. *Nature* 437(7057):426–431
47. Hahn C et al (2009) The subendothelial extracellular matrix modulates JNK activation by flow. *Circ Res* 104(8):995–1003
48. Orr AW et al (2008) p21-activated kinase signaling regulates oxidant-dependent NF-kappa B activation by flow. *Circ Res* 103(6):671–679
49. Orr AW et al (2007) Matrix-specific p21-activated kinase activation regulates vascular permeability in atherogenesis. *J Cell Biol* 176(5):719–727
50. Bhullar IS et al (1998) Fluid shear stress activation of IkappaB kinase is integrin-dependent. *J Biol Chem* 273(46):30544–30549
51. Sun X et al (2016) Activation of integrin alpha5 mediated by flow requires its translocation to membrane lipid rafts in vascular endothelial cells. *Proc Natl Acad Sci USA* 113(3):769–774
52. Yun S et al (2016) Interaction between integrin alpha5 and PDE4D regulates endothelial inflammatory signalling. *Nat Cell Biol* 18(10):1043–1053
53. Yurdagul A Jr. et al (2014)  $\alpha 5\beta 1$  integrin signaling mediates oxidized low-density lipoprotein-induced inflammation and early atherosclerosis. *Arterioscler Thromb Vasc Biol* 34(7):1362–1373
54. Yurdagul A Jr. et al (2016) Oxidized LDL induces FAK-dependent RSK signaling to drive NF-kappaB activation and VCAM-1 expression. *J Cell Sci* 129:1580–1591
55. Funk SD, Yurdagul A Jr., Orr AW (2012) Hyperglycemia and endothelial dysfunction in atherosclerosis: lessons from type 1 diabetes. *Int J Vasc Med* 2012:569654
56. Pober JS, Min W (2006) Endothelial cell dysfunction, injury and death. *Handb Exp Pharmacol* 176(Pt 2):135–156
57. Fleming I (2010) Molecular mechanisms underlying the activation of eNOS. *Pflugers Arch* 459(6):793–806
58. Dimmeler S et al (1999) Activation of nitric oxide synthase in endothelial cells by Akt-dependent phosphorylation. *Nature* 399(6736):601–605
59. Boo YC et al (2002) Shear stress stimulates phosphorylation of endothelial nitric-oxide synthase at Ser1179 by Akt-independent mechanisms: role of protein kinase A. *J Biol Chem* 277(5):3388–3396
60. Yang B, Rizzo V (2013) Shear stress activates eNOS at the endothelial apical surface through I containing integrins and caveolae. *Cell Mol Bioeng* 6(3):346–354
61. Orr AW et al (2006) Matrix-specific suppression of integrin activation in shear stress signaling. *Mol Biol Cell* 17(11):4686–4697
62. Yurdagul A Jr. et al (2013) Altered nitric oxide production mediates matrix-specific PAK2 and NF-kappaB activation by flow. *Mol Biol Cell* 24(3):398–408
63. Funk SD et al (2010) Matrix-specific protein kinase A signaling regulates p21-activated kinase activation by flow in endothelial cells. *Circ Res* 106(8):1394–1403
64. Mulligan-Kehoe MJ, Simons M (2014) Vasa vasorum in normal and diseased arteries. *Circulation* 129(24):2557–2566
65. Annex BH (2013) Therapeutic angiogenesis for critical limb ischaemia. *Nat Rev Cardiol* 10(7):387–396
66. Kwon HM et al (1998) Enhanced coronary vasa vasorum neovascularization in experimental hypercholesterolemia. *J Clin Invest* 101(8):1551–1556
67. Langheinrich AC et al (2006) Correlation of vasa vasorum neovascularization and plaque progression in aortas of apolipoprotein E(-)/low-density lipoprotein(-) double knockout mice. *Arterioscler Thromb Vasc Biol* 26(2):347–352
68. Moulton KS et al (2003) Inhibition of plaque neovascularization reduces macrophage accumulation and progression of advanced atherosclerosis. *Proc Natl Acad Sci USA* 100(8):4736–4741
69. O'Brien KD et al (1996) Neovascular expression of E-selectin, intercellular adhesion molecule-1, and vascular cell adhesion molecule-1 in human atherosclerosis and their relation to intimal leukocyte content. *Circulation* 93(4):672–682
70. Moreno PR et al (2004) Plaque neovascularization is increased in ruptured atherosclerotic lesions of human aorta: implications for plaque vulnerability. *Circulation* 110(14):2032–2038
71. Virmani R et al (2005) Atherosclerotic plaque progression and vulnerability to rupture: angiogenesis as a source of intraplaque hemorrhage. *Arterioscler Thromb Vasc Biol* 25(10):2054–2061
72. Semenza GL (2014) Hypoxia-inducible factor 1 and cardiovascular disease. *Annu Rev Physiol* 76:39–56
73. Mollmark JJ et al (2012) Fibroblast growth factor-2 is required for vasa vasorum plexus stability in hypercholesterolemic mice. *Arterioscler Thromb Vasc Biol* 32(11):2644–2651
74. Hutter R et al (2013) Macrophages transmit potent proangiogenic effects of oxLDL in vitro and in vivo involving HIF-1alpha activation: a novel aspect of angiogenesis in atherosclerosis. *J Cardiovasc Transl Res* 6(4):558–569
75. Jaipersad AS et al (2014) The role of monocytes in angiogenesis and atherosclerosis. *J Am Coll Cardiol* 63(1):1–11
76. Heistad DD, Marcus ML (1979) Role of vasa vasorum in nourishment of the aorta. *Blood Vessels* 16(5):225–238
77. Moulton KS et al (1999) Angiogenesis inhibitors endostatin or TNP-470 reduce intimal neovascularization and plaque growth in apolipoprotein E-deficient mice. *Circulation* 99(13):1726–1732
78. Drinane M et al (2009) The antiangiogenic activity of rPAI-1(23) inhibits vasa vasorum and growth of atherosclerotic plaque. *Circ Res* 104(3):337–345

79. Okamoto E et al (2001) Perivascular inflammation after balloon angioplasty of porcine coronary arteries. *Circulation* 104(18):2228–2235
80. Khurana R et al (2004) Angiogenesis-dependent and independent phases of intimal hyperplasia. *Circulation* 110(16):2436–2443
81. Koga J et al (2009) Soluble Flt-1 gene transfer ameliorates neointima formation after wire injury in flt-1 tyrosine kinase-deficient mice. *Arterioscler Thromb Vasc Biol* 29(4):458–464
82. Ohtani K et al (2004) Blockade of vascular endothelial growth factor suppresses experimental restenosis after intraluminal injury by inhibiting recruitment of monocyte lineage cells. *Circulation* 110(16):2444–2452
83. Robinson SD, Hovidala-Dilke KM (2011) The role of beta3-integrins in tumor angiogenesis: context is everything. *Curr Opin Cell Biol* 23(5):630–637
84. Rehn M et al (2001) Interaction of endostatin with integrins implicated in angiogenesis. *Proc Natl Acad Sci USA* 98(3):1024–1029
85. Xu X et al (2015) Angiogenesis inhibitor, endostar, prevents vasa vasorum neovascularization in a swine atherosclerosis model. *J Atheroscler Thromb* 22(10):1100–1112
86. Brooks PC, Clark RA, Cheresch DA (1994) Requirement of vascular integrin alpha v beta 3 for angiogenesis. *Science* 264(5158):569–571
87. Kim S et al (2000) Regulation of angiogenesis in vivo by ligation of integrin alpha5beta1 with the central cell-binding domain of fibronectin. *Am J Pathol* 156(4):1345–1362
88. Orbay H et al (2013) Positron emission tomography imaging of atherosclerosis. *Theranostics* 3(11):894–902
89. Hovidala-Dilke KM et al (1999) Beta3-integrin-deficient mice are a model for Glanzmann thrombasthenia showing placental defects and reduced survival. *J Clin Invest* 103(2):229–238
90. Bader BL et al (1998) Extensive vasculogenesis, angiogenesis, and organogenesis precede lethality in mice lacking all alpha v integrins. *Cell* 95(4):507–519
91. Reynolds LE et al (2002) Enhanced pathological angiogenesis in mice lacking beta3 integrin or beta3 and beta5 integrins. *Nat Med* 8(1):27–34
92. van der Flier A et al (2010) Endothelial alpha5 and alphav integrins cooperate in remodeling of the vasculature during development. *Development* 137(14):2439–2449
93. Murphy PA, Begum S, Hynes RO (2015) Tumor angiogenesis in the absence of fibronectin or its cognate integrin receptors. *PLoS One* 10(3):e0120872
94. Berlin, C., et al (1993) Alpha 4 beta 7 integrin mediates lymphocyte binding to the mucosal vascular addressin MAdCAM-1. *Cell* 74(1):185–195
95. Libby P, Hansson GK (2015) Inflammation and immunity in diseases of the arterial tree: players and layers. *Circ Res* 116(2):307–311
96. Johnson-Tidey RR et al (1994) Increase in the adhesion molecule P-selectin in endothelium overlying atherosclerotic plaques. Coexpression with intercellular adhesion molecule-1. *Am J Pathol* 144(5):952–961
97. van der Wal AC et al (1992) Adhesion molecules on the endothelium and mononuclear cells in human atherosclerotic lesions. *Am J Pathol* 141(6):1427–1433
98. Collins RG et al (2000) P-Selectin or intercellular adhesion molecule (ICAM)-1 deficiency substantially protects against atherosclerosis in apolipoprotein E-deficient mice. *J Exp Med* 191(1):189–194
99. Dong ZM, Brown AA, Wagner DD (2000) Prominent role of P-selectin in the development of advanced atherosclerosis in ApoE-deficient mice. *Circulation* 101(19):2290–2295
100. Alon R et al (1995) The integrin VLA-4 supports tethering and rolling in flow on VCAM-1. *J Cell Biol* 128(6):1243–1253
101. Zarbock A, Lowell CA, Ley K (2007) Spleen tyrosine kinase Syk is necessary for E-selectin-induced alpha(L)beta(2) integrin-mediated rolling on intercellular adhesion molecule-1. *Immunity* 26(6):773–783
102. Shamri R et al (2005) Lymphocyte arrest requires instantaneous induction of an extended LFA-1 conformation mediated by endothelium-bound chemokines. *Nat Immunol* 6(5):497–506
103. Boring L et al (1998) Decreased lesion formation in CCR2<sup>-/-</sup> mice reveals a role for chemokines in the initiation of atherosclerosis. *Nature* 394(6696):894–897
104. Gu L et al (1998) Absence of monocyte chemoattractant protein-1 reduces atherosclerosis in low density lipoprotein receptor-deficient mice. *Mol Cell* 2(2):275–281
105. Braunersreuther V et al (2007) Ccr5 but not Ccr1 deficiency reduces development of diet-induced atherosclerosis in mice. *Arterioscler Thromb Vasc Biol* 27(2):373–379
106. Braunersreuther V et al (2008) A novel RANTES antagonist prevents progression of established atherosclerotic lesions in mice. *Arterioscler Thromb Vasc Biol* 28(6):1090–1096
107. Combadiere C et al (2003) Decreased atherosclerotic lesion formation in CX3CR1/apolipoprotein E double knockout mice. *Circulation* 107(7):1009–1016
108. Lesnik P, Haskell CA, Charo IF (2003) Decreased atherosclerosis in CX3CR1<sup>-/-</sup> mice reveals a role for fractalkine in atherogenesis. *J Clin Invest* 111(3):333–340
109. Funk SD, Orr AW (2013) Ephs and ephrins resurface in inflammation, immunity, and atherosclerosis. *Pharmacol Res* 67(1):42–52
110. Braun J et al (2011) Endothelial cell ephrinB2-dependent activation of monocytes in arteriosclerosis. *Arterioscler Thromb Vasc Biol* 31(2):297–305
111. Jellinghaus S et al (2013) Ephrin-A1/EphA4-mediated adhesion of monocytes to endothelial cells. *Biochim Biophys Acta* 1833(10):2201–2211
112. Saeki N et al (2015) EphA2 promotes cell adhesion and spreading of monocyte and monocyte/macrophage cell lines on integrin ligand-coated surfaces. *Cell Adh Migr* 9(6):469–482
113. Poitz DM et al (2015) EphrinB2/EphA4-mediated activation of endothelial cells increases monocyte adhesion. *Mol Immunol* 68(2 Pt C):648–656
114. Funk SD et al (2012) EphA2 activation promotes the endothelial cell inflammatory response: a potential role in atherosclerosis. *Arterioscler Thromb Vasc Biol* 32(3):686–695
115. van Gils JM et al (2013) Endothelial expression of guidance cues in vessel wall homeostasis dysregulation under proatherosclerotic conditions. *Arterioscler Thromb Vasc Biol* 33(5):911–919
116. Nageh MF et al (1997) Deficiency of inflammatory cell adhesion molecules protects against atherosclerosis in mice. *Arterioscler Thromb Vasc Biol* 17(8):1517–1520
117. Bourdillon MC et al (2000) ICAM-1 deficiency reduces atherosclerotic lesions in double-knockout mice (ApoE<sup>(-/-)</sup>/ICAM-1<sup>(-/-)</sup>) fed a fat or a chow diet. *Arterioscler Thromb Vasc Biol* 20(12):2630–2635
118. Arnaout MA (2016) Biology and structure of leukocyte beta 2 integrins and their role in inflammation. *F1000Res*. doi:10.12688/f1000research.9415.1
119. Sadhu C et al (2007) CD11c/CD18: novel ligands and a role in delayed-type hypersensitivity. *J Leukoc Biol* 81(6):1395–1403
120. Huo Y, Hafezi-Moghadam A, Ley K (2000) Role of vascular cell adhesion molecule-1 and fibronectin connecting segment-1 in monocyte rolling and adhesion on early atherosclerotic lesions. *Circ Res* 87(2):153–159



121. Barringhaus KG et al (2004) Alpha4beta1 integrin (VLA-4) blockade attenuates both early and late leukocyte recruitment and neointimal growth following carotid injury in apolipoprotein E (-/-) mice. *J Vasc Res* 41(3):252–260
122. Yang JT, Rayburn H, Hynes RO (1995) Cell adhesion events mediated by alpha 4 integrins are essential in placental and cardiac development. *Development* 121(2):549–560
123. Shih PT et al (1999) Minimally modified low-density lipoprotein induces monocyte adhesion to endothelial connecting segment-1 by activating beta1 integrin. *J Clin Invest* 103(5):613–625
124. Merched A, Tollefson K, Chan L (2010) Beta2 integrins modulate the initiation and progression of atherosclerosis in low-density lipoprotein receptor knockout mice. *Cardiovasc Res* 85(4):853–863
125. Nie Q et al (1997) Inhibition of mononuclear cell recruitment in aortic intima by treatment with anti-ICAM-1 and anti-LFA-1 monoclonal antibodies in hypercholesterolemic rats: implications of the ICAM-1 and LFA-1 pathway in atherogenesis. *Lab Invest* 77(5):469–482
126. Kawamura A et al (2007) Apolipoprotein E interrupts interleukin-1beta signaling in vascular smooth muscle cells. *Arterioscler Thromb Vasc Biol* 27(7):1610–1617
127. Kubo N et al (2000) Leukocyte CD11b expression is not essential for the development of atherosclerosis in mice. *J Lipid Res* 41(7):1060–1066
128. Wu H et al (2009) Functional role of CD11c+ monocytes in atherogenesis associated with hypercholesterolemia. *Circulation* 119(20):2708–2717
129. Hogg N et al (1986) The p150, 95 molecule is a marker of human mononuclear phagocytes: comparison with expression of class II molecules. *Eur J Immunol* 16(3):240–248
130. Blackford J et al (1996) A monoclonal antibody, 3/22, to rabbit CD11c which induces homotypic T cell aggregation: evidence that ICAM-1 is a ligand for CD11c/CD18. *Eur J Immunol* 26(3):525–531
131. Loike JD et al (1991) CD11c/CD18 on neutrophils recognizes a domain at the N terminus of the A alpha chain of fibrinogen. *Proc Natl Acad Sci USA* 88(3):1044–1048
132. Foster GA et al (2015) CD11c/CD18 signals very late antigen-4 activation to initiate foamy monocyte recruitment during the onset of hypercholesterolemia. *J Immunol* 195(11):5380–5392
133. Gower RM et al (2011) CD11c/CD18 expression is upregulated on blood monocytes during hypertriglyceridemia and enhances adhesion to vascular cell adhesion molecule-1. *Arterioscler Thromb Vasc Biol* 31(1):160–166
134. Han J et al (2006) Reconstructing and deconstructing agonist-induced activation of integrin alphaIIb beta3. *Curr Biol* 16(18):1796–1806
135. Boulaftali Y et al (2016) CalDAG-GEFI deficiency reduces atherosclerotic lesion development in mice. *Arterioscler Thromb Vasc Biol* 36:792–799
136. Moser M et al (2009) Kindlin-3 is required for beta2 integrin-mediated leukocyte adhesion to endothelial cells. *Nat Med* 15(3):300–305
137. Malinin NL et al (2009) A point mutation in KINDLIN3 ablates activation of three integrin subfamilies in humans. *Nat Med* 15(3):313–318
138. Hyduk SJ et al (2011) Talin-1 and kindlin-3 regulate alpha4beta1 integrin-mediated adhesion stabilization, but not G protein-coupled receptor-induced affinity upregulation. *J Immunol* 187(8):4360–4368
139. Becker HM et al (2013) Alpha1beta1 integrin-mediated adhesion inhibits macrophage exit from a peripheral inflammatory lesion. *J Immunol* 190(8):4305–4314
140. Antonov AS et al (2004) Regulation of macrophage foam cell formation by alphaVbeta3 integrin: potential role in human atherosclerosis. *Am J Pathol* 165(1):247–258
141. Prieto J, Eklund A, Patarroyo M (1994) Regulated expression of integrins and other adhesion molecules during differentiation of monocytes into macrophages. *Cell Immunol* 156(1):191–211
142. De Nichilo MO, Yamada KM (1996) Integrin alpha v beta 5-dependent serine phosphorylation of paxillin in cultured human macrophages adherent to vitronectin. *J Biol Chem* 271(18):11016–11022
143. Ammon C et al (2000) Comparative analysis of integrin expression on monocyte-derived macrophages and monocyte-derived dendritic cells. *Immunology* 100(3):364–369
144. Schapira K et al (2005) Genetic deletion or antibody blockade of alpha1beta1 integrin induces a stable plaque phenotype in ApoE-/- mice. *Arterioscler Thromb Vasc Biol* 25(9):1917–1924
145. Lund SA et al., Osteopontin mediates macrophage chemotaxis via alpha(4) and alpha(9) integrins and survival via the alpha(4) integrin. *J Cell Biochem*, 2012
146. Yakubenko VP, Yadav SP, Ugarova TP (2006) Integrin alphaD-beta2, an adhesion receptor up-regulated on macrophage foam cells, exhibits multiligand-binding properties. *Blood* 107(4):1643–1650
147. Yakubenko VP et al (2008) The role of integrin alpha D beta2 (CD11d/CD18) in monocyte/macrophage migration. *Exp Cell Res* 314(14):2569–2578
148. Lishko VK, Yakubenko VP, Ugarova TP (2003) The interplay between integrins alphaMbeta2 and alpha5beta1 during cell migration to fibronectin. *Exp Cell Res* 283(1):116–126
149. Yakubenko VP et al (2011) Alphabeta(2) integrin activation prevents alternative activation of human and murine macrophages and impedes foam cell formation. *Circ Res* 108(5):544–554
150. Gray JL, Shankar R (1995) Down regulation of CD11b and CD18 expression in atherosclerotic lesion-derived macrophages. *Am Surg* 61(8):674–679 (**discussion 679–80**)
151. Zhi K et al (2014) Alpha4beta7 Integrin (LPAM-1) is upregulated at atherosclerotic lesions and is involved in atherosclerosis progression. *Cell Physiol Biochem* 33(6):1876–1887
152. Antonov AS et al (2011) AlphaVbeta3 integrin regulates macrophage inflammatory responses via PI3 kinase/Akt-dependent NF-kappaB activation. *J Cell Physiol* 226(2):469–476
153. Schneider JG et al (2007) Macrophage beta3 integrin suppresses hyperlipidemia-induced inflammation by modulating TNFalpha expression. *Arterioscler Thromb Vasc Biol* 27(12):2699–2706
154. Lacy-Hulbert A et al (2007) Ulcerative colitis and autoimmunity induced by loss of myeloid alphav integrins. *Proc Natl Acad Sci USA* 104(40):15823–15828
155. Poon IK et al (2014) Apoptotic cell clearance: basic biology and therapeutic potential. *Nat Rev Immunol* 14(3):166–180
156. Savill J et al (1990) Vitronectin receptor-mediated phagocytosis of cells undergoing apoptosis. *Nature* 343(6254):170–173
157. Hanayama R et al (2004) Autoimmune disease and impaired uptake of apoptotic cells in MFG-E8-deficient mice. *Science* 304(5674):1147–1150
158. Friggeri A et al (2010) HMGB1 inhibits macrophage activity in efferocytosis through binding to the alphavbeta3-integrin. *Am J Physiol Cell Physiol* 299(6):C1267–C1276
159. Fan Z et al (2016) HMGB1: a promising therapeutic approach for atherosclerosis. *Int J Cardiol* 202:507–508
160. Wall VZ, Bornfeldt KE (2014) Arterial smooth muscle. *Arterioscler Thromb Vasc Biol* 34(10):2175–2179
161. Hedin U et al (1988) Diverse effects of fibronectin and laminin on phenotypic properties of cultured arterial smooth muscle cells. *J Cell Biol* 107(1):307–319

162. Orr AW et al (2010) Complex regulation and function of the inflammatory smooth muscle cell phenotype in atherosclerosis. *J Vasc Res* 47(2):168–180
163. Vengrenyuk Y et al (2015) Cholesterol loading reprograms the microRNA-143/145-myocardin axis to convert aortic smooth muscle cells to a dysfunctional macrophage-like phenotype. *Arterioscler Thromb Vasc Biol* 35(3):535–546
164. Shankman LS et al (2015) KLF4-dependent phenotypic modulation of smooth muscle cells has a key role in atherosclerotic plaque pathogenesis. *Nat Med* 21(6):628–637
165. Voss B, Rauterberg J (1986) Localization of collagen types I, III, IV and V, fibronectin and laminin in human arteries by the indirect immunofluorescence method. *Pathol Res Pract* 181(5):568–575
166. Moiseeva EP (2001) Adhesion receptors of vascular smooth muscle cells and their functions. *Cardiovasc Res* 52(3):372–386
167. Heino J (2000) The collagen receptor integrins have distinct ligand recognition and signaling functions. *Matrix Biol* 19(4):319–323
168. Obata H et al (1997) Smooth muscle cell phenotype-dependent transcriptional regulation of the alpha1 integrin gene. *J Biol Chem* 272(42):26643–26651
169. Cremona O et al (1994) The alpha6 and beta4 integrin subunits are expressed by smooth muscle cells of human small vessels: a new localization in mesenchymal cells. *J Histochem Cytochem* 42(9):1221–1228
170. Yao CC et al (1997) Functional expression of the alpha 7 integrin receptor in differentiated smooth muscle cells. *J Cell Sci* 110(Pt 13):1477–1487
171. Wang L et al (2010) Cartilage oligomeric matrix protein maintains the contractile phenotype of vascular smooth muscle cells by interacting with alpha(7)beta(1) integrin. *Circ Res* 106(3):514–525
172. Welser JV et al (2007) Loss of the alpha7 integrin promotes extracellular signal-regulated kinase activation and altered vascular remodeling. *Circ Res* 101(7):672–681
173. Blindt R et al (2002) Expression patterns of integrins on quiescent and invasive smooth muscle cells and impact on cell locomotion. *J Mol Cell Cardiol* 34(12):1633–1644
174. Hoshiga M et al (1995) Alpha-v beta-3 integrin expression in normal and atherosclerotic artery. *Circ Res* 77(6):1129–1135
175. van der Zee R et al (1998) Reduced intimal thickening following alpha(v)beta3 blockade is associated with smooth muscle cell apoptosis. *Cell Adhes Commun* 6(5):371–379
176. Janat MF, Argraves WS, Liao G (1992) Regulation of vascular smooth muscle cell integrin expression by transforming growth factor beta1 and by platelet-derived growth factor-BB. *J Cell Physiol* 151(3):588–595
177. Brown SL et al (1994) Stimulation of migration of human aortic smooth muscle cells by vitronectin: implications for atherosclerosis. *Cardiovasc Res* 28(12):1815–1820
178. Liu J et al (2014) Oxidized low-density lipoprotein increases the proliferation and migration of human coronary artery smooth muscle cells through the upregulation of osteopontin. *Int J Mol Med* 33(5):1341–1347
179. Yamamoto K et al (2005) Tenascin-C is an essential factor for neointimal hyperplasia after aortotomy in mice. *Cardiovasc Res* 65(3):737–742
180. Ishigaki T et al (2011) Tenascin-C enhances crosstalk signaling of integrin alphavbeta3/PDGFR-beta complex by SRC recruitment promoting PDGF-induced proliferation and migration in smooth muscle cells. *J Cell Physiol* 226(10):2617–2624
181. Choi ET et al (1994) Inhibition of neointimal hyperplasia by blocking alpha V beta 3 integrin with a small peptide antagonist GpenGRGDSPCA. *J Vasc Surg* 19(1):125–134
182. Bishop GG et al (2001) Selective alpha(v)beta(3)-receptor blockade reduces macrophage infiltration and restenosis after balloon angioplasty in the atherosclerotic rabbit. *Circulation* 103(14):1906–1911
183. Weng S et al (2003) Beta3 integrin deficiency promotes atherosclerosis and pulmonary inflammation in high-fat-fed, hyperlipidemic mice. *Proc Natl Acad Sci USA* 100(11):6730–6735
184. Panchatcharam M et al (2010) Enhanced proliferation and migration of vascular smooth muscle cells in response to vascular injury under hyperglycemic conditions is controlled by beta3 integrin signaling. *Int J Biochem Cell Biol* 42(6):965–974
185. Li G et al (2010) Periostin mediates vascular smooth muscle cell migration through the integrins alphavbeta3 and alphavbeta5 and focal adhesion kinase (FAK) pathway. *Atherosclerosis* 208(2):358–365
186. Schaller MD (2001) Biochemical signals and biological responses elicited by the focal adhesion kinase. *Biochim Biophys Acta* 1540(1):1–21
187. Moiseeva EP et al (2003) Galectin-1 interacts with beta-1 subunit of integrin. *Biochem Biophys Res Commun* 310(3):1010–1016
188. Lee BH et al (2006) Betaig-h3 triggers signaling pathways mediating adhesion and migration of vascular smooth muscle cells through alphavbeta5 integrin. *Exp Mol Med* 38(2):153–161
189. Taylor JM et al (2001) Selective expression of an endogenous inhibitor of FAK regulates proliferation and migration of vascular smooth muscle cells. *Mol Cell Biol* 21(5):1565–1572
190. Maile LA et al (2010) A monoclonal antibody against alphaVbeta3 integrin inhibits development of atherosclerotic lesions in diabetic pigs. *Sci Transl Med* 2(18):18ra11
191. Zheng B, Clemmons DR (1998) Blocking ligand occupancy of the alphaVbeta3 integrin inhibits insulin-like growth factor I signaling in vascular smooth muscle cells. *Proc Natl Acad Sci USA* 95(19):11217–11222
192. Hong Z et al (2012) Coordination of fibronectin adhesion with contraction and relaxation in microvascular smooth muscle. *Cardiovasc Res* 96(1):73–80
193. Hong Z et al (2015) Vascular smooth muscle cell stiffness and adhesion to collagen I modified by vasoactive agonists. *PLoS One* 10(3):e0119533
194. Kappert K et al (2000) Angiotensin II and PDGF-BB stimulate beta(1)-integrin-mediated adhesion and spreading in human VSMCs. *Hypertension* 35(1 Pt 2):255–261
195. Bunni MA et al (2011) Role of integrins in angiotensin II-induced proliferation of vascular smooth muscle cells. *Am J Physiol Cell Physiol* 300(3):C647–C656
196. Tamura K et al (2001) Synergistic interaction of integrin and angiotensin II in activation of extracellular signal-regulated kinase pathways in vascular smooth muscle cells. *J Cardiovasc Pharmacol* 38(Suppl 1):S59–S62
197. Montezano AC et al (2014) Angiotensin II and vascular injury. *Curr Hypertens Rep* 16(6):431
198. Schnapp LM et al (1998) Integrins inhibit angiotensin II-induced contraction in rat aortic rings. *Regul Pept* 77(1–3):177–183
199. Louis H et al (2007) Role of alpha1beta1-integrin in arterial stiffness and angiotensin-induced arterial wall hypertrophy in mice. *Am J Physiol Heart Circ Physiol* 293(4):H2597–H2604
200. Moraes JA et al (2015) Alpha1beta1 and integrin-linked kinase interact and modulate angiotensin II effects in vascular smooth muscle cells. *Atherosclerosis* 243(2):477–485
201. Brassard P et al (2006) Role of angiotensin type-1 and angiotensin type-2 receptors in the expression of vascular integrins in angiotensin II-infused rats. *Hypertension* 47(1):122–127

202. Li S et al (2003) Vascular smooth muscle cells orchestrate the assembly of type I collagen via alpha2beta1 integrin, RhoA, and fibronectin polymerization. *Am J Pathol* 163(3):1045–1056
203. Polte TR, Naftilan AJ, Hanks SK (1994) Focal adhesion kinase is abundant in developing blood vessels and elevation of its phosphotyrosine content in vascular smooth muscle cells is a rapid response to angiotensin II. *J Cell Biochem* 55(1):106–119
204. Zhang F et al (2016) Angiotensin-(1–7) abrogates angiotensin II-induced proliferation, migration and inflammation in VSMCs through inactivation of ROS-mediated PI3K/Akt and MAPK/ERK signaling pathways. *Sci Rep* 6:34621
205. Blaschke F et al (2002) Angiotensin II-augmented migration of VSMCs towards PDGF-BB involves Pyk2 and ERK 1/2 activation. *Basic Res Cardiol* 97(4):334–342
206. Taniyama Y et al (2003) Pyk2- and Src-dependent tyrosine phosphorylation of PDK1 regulates focal adhesions. *Mol Cell Biol* 23(22):8019–8029
207. Ishida T et al (1999) Agonist-stimulated cytoskeletal reorganization and signal transduction at focal adhesions in vascular smooth muscle cells require c-Src. *J Clin Invest* 103(6):789–797
208. Zargham R, Pepin J, Thibault G (2007) Alpha8beta1 Integrin is up-regulated in the neointima concomitant with late luminal loss after balloon injury. *Cardiovasc Pathol* 16(4):212–220
209. Zargham R, Thibault G (2006) Alpha 8 integrin expression is required for maintenance of the smooth muscle cell differentiated phenotype. *Cardiovasc Res* 71(1):170–178
210. Zargham R, Thibault G (2005) Alpha8beta1 Integrin expression in the rat carotid artery: involvement in smooth muscle cell migration and neointima formation. *Cardiovasc Res* 65(4):813–822
211. Zargham R, Touyz RM, Thibault G (2007) Alpha 8 Integrin overexpression in de-differentiated vascular smooth muscle cells attenuates migratory activity and restores the characteristics of the differentiated phenotype. *Atherosclerosis* 195(2):303–312
212. Menendez-Castro C et al (2015) Under-expression of alpha8 integrin aggravates experimental atherosclerosis. *J Pathol* 236(1):5–16
213. Hou G et al (2000) Type VIII collagen stimulates smooth muscle cell migration and matrix metalloproteinase synthesis after arterial injury. *Am J Pathol* 156(2):467–476
214. Adiguzel E et al (2006) Migration and growth are attenuated in vascular smooth muscle cells with type VIII collagen-null alleles. *Arterioscler Thromb Vasc Biol* 26(1):56–61
215. Hollenbeck ST et al (2004) Type I collagen synergistically enhances PDGF-induced smooth muscle cell proliferation through pp60src-dependent crosstalk between the alpha2beta1 integrin and PDGFbeta receptor. *Biochem Biophys Res Commun* 325(1):328–337
216. Chung CH et al (2009) The integrin alpha(2)beta(1) agonist, aggregin, promotes proliferation and migration of VSMC through NF-kB translocation and PDGF production. *Br J Pharmacol* 156:846–856
217. Lopes J et al (2013) Type VIII collagen mediates vessel wall remodeling after arterial injury and fibrous cap formation in atherosclerosis. *Am J Pathol* 182(6):2241–2253
218. Pickering JG et al (2000) Alpha5beta1 integrin expression and luminal edge fibronectin matrix assembly by smooth muscle cells after arterial injury. *Am J Pathol* 156(2):453–465
219. Mao Y, Schwarzbauer JE (2005) Fibronectin fibrillogenesis, a cell-mediated matrix assembly process. *Matrix Biol* 24(6):389–399
220. Frontini MJ et al (2009) Lipid incorporation inhibits Src-dependent assembly of fibronectin and type I collagen by vascular smooth muscle cells. *Circ Res* 104(7):832–841
221. Cheng J et al (2007) Mechanical stretch inhibits oxidized low density lipoprotein-induced apoptosis in vascular smooth muscle cells by up-regulating integrin alphavbeta3 and stabilization of PINCH-1. *J Biol Chem* 282(47):34268–34275
222. Ikari Y, Yee KO, Schwartz SM (2000) Role of alpha5beta1 and alphavbeta3 integrins on smooth muscle cell spreading and migration in fibrin gels. *Thromb Haemost* 84(4):701–705
223. Massberg S et al (2002) A critical role of platelet adhesion in the initiation of atherosclerotic lesion formation. *J Exp Med* 196(7):887–896
224. Belton OA et al (2003) Cyclooxygenase isoforms and platelet vessel wall interactions in the apolipoprotein E knockout mouse model of atherosclerosis. *Circulation* 108(24):3017–3023
225. Gawaz M et al (1997) Vitronectin receptor (alpha(v)beta3) mediates platelet adhesion to the luminal aspect of endothelial cells: implications for reperfusion in acute myocardial infarction. *Circulation* 96(6):1809–1818
226. Evangelista V et al (2003) Role of P-selectin, beta2-integrins, and Src tyrosine kinases in mouse neutrophil-platelet adhesion. *J Thromb Haemost* 1(5):1048–1054
227. Neumann FJ et al (1999) Effect of glycoprotein IIb/IIIa receptor blockade on platelet-leukocyte interaction and surface expression of the leukocyte integrin Mac-1 in acute myocardial infarction. *J Am Coll Cardiol* 34(5):1420–1426
228. Patko Z et al (2012) Roles of Mac-1 and glycoprotein IIb/IIIa integrins in leukocyte-platelet aggregate formation: stabilization by Mac-1 and inhibition by GpIIb/IIIa blockers. *Platelets* 23(5):368–375
229. Weber C, Springer TA (1997) Neutrophil accumulation on activated, surface-adherent platelets in flow is mediated by interaction of Mac-1 with fibrinogen bound to alphaIIb beta3 and stimulated by platelet-activating factor. *J Clin Invest* 100(8):2085–2093
230. Sreeramkumar V et al (2014) Neutrophils scan for activated platelets to initiate inflammation. *Science* 346(6214):1234–1238
231. von Hundelshausen P et al (2001) RANTES deposition by platelets triggers monocyte arrest on inflamed and atherosclerotic endothelium. *Circulation* 103(13):1772–1777
232. van Gils JM et al (2008) Transendothelial migration drives dissociation of plateletmonocyte complexes. *Thromb Haemost* 100(2):271–279
233. Fernandez-Patron C et al (1999) Differential regulation of platelet aggregation by matrix metalloproteinases-9 and -2. *Thromb Haemost* 82(6):1730–1735
234. Sawicki G et al (1997) Release of gelatinase A during platelet activation mediates aggregation. *Nature* 386(6625):616–619
235. May AE et al (2002) Engagement of glycoprotein IIb/IIIa (alpha(IIb)beta3) on platelets upregulates CD40L and triggers CD40L-dependent matrix degradation by endothelial cells. *Circulation* 106(16):2111–2117
236. Nannizzi-Alaimo L, Alves VL, Phillips DR (2003) Inhibitory effects of glycoprotein IIb/IIIa antagonists and aspirin on the release of soluble CD40 ligand during platelet stimulation. *Circulation* 107(8):1123–1128
237. Lievens D et al (2010) Platelet CD40L mediates thrombotic and inflammatory processes in atherosclerosis. *Blood* 116(20):4317–4327
238. Simic D et al (2015) Blocking alpha5beta1 integrin attenuates sCD40L-mediated platelet activation. *Clin Appl Thromb Hemost*
239. Santoro SA (1986) Identification of a 160,000 dalton platelet membrane protein that mediates the initial divalent cation-dependent adhesion of platelets to collagen. *Cell* 46(6):913–920
240. Ruggeri ZM (2009) Platelet adhesion under flow. *Microcirculation* 16(1):58–83

241. Sims PJ et al (1989) Assembly of the platelet prothrombinase complex is linked to vesiculation of the platelet plasma membrane. Studies in Scott syndrome: an isolated defect in platelet procoagulant activity. *J Biol Chem* 264(29):17049–17057
242. Hughes PE, Pfaff M (1998) Integrin affinity modulation. *Trends Cell Biol* 8(9):359–364
243. Mastenbroek TG et al (2015) Acute and persistent platelet and coagulant activities in atherothrombosis. *J Thromb Haemost* 13(Suppl 1):S272–S280
244. Hechler B, Gachet C Comparison of two murine models of thrombosis induced by atherosclerotic plaque injury. *Thromb Haemost* 105(Suppl 1):S3–S12
245. Goto S et al (2002) Involvement of glycoprotein VI in platelet thrombus formation on both collagen and von Willebrand factor surfaces under flow conditions. *Circulation* 106(2):266–272
246. Nesbitt WS et al (2009) A shear gradient-dependent platelet aggregation mechanism drives thrombus formation. *Nat Med* 15(6):665–673
247. Collins C et al (2014) Haemodynamic and extracellular matrix cues regulate the mechanical phenotype and stiffness of aortic endothelial cells. *Nat Commun* 5:3984
248. Kawamura A et al (2004) Increased expression of monocyte CD11a and intracellular adhesion molecule-1 in patients with initial atherosclerotic coronary stenosis. *Circ J* 68(1):6–10
249. Skinner MP, Raines EW, Ross R (1994) Dynamic expression of alpha 1 beta 1 and alpha 2 beta 1 integrin receptors by human vascular smooth muscle cells. Alpha 2 beta 1 integrin is required for chemotaxis across type I collagen-coated membranes. *Am J Pathol* 145(5):1070–1081